

## WAWIC 2026 Madrid

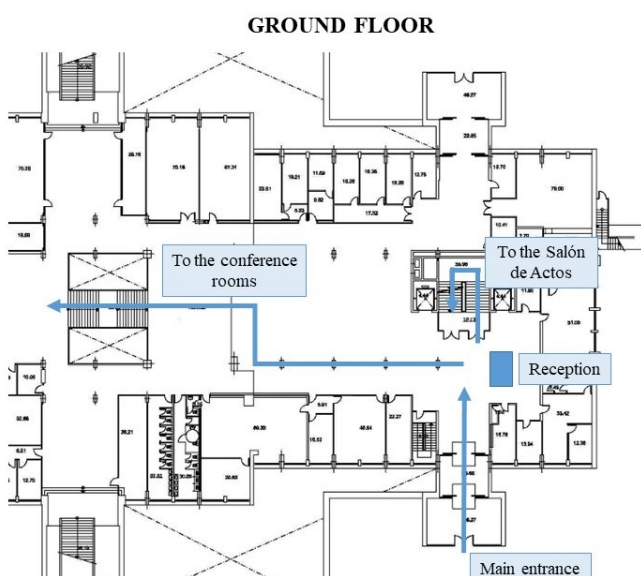
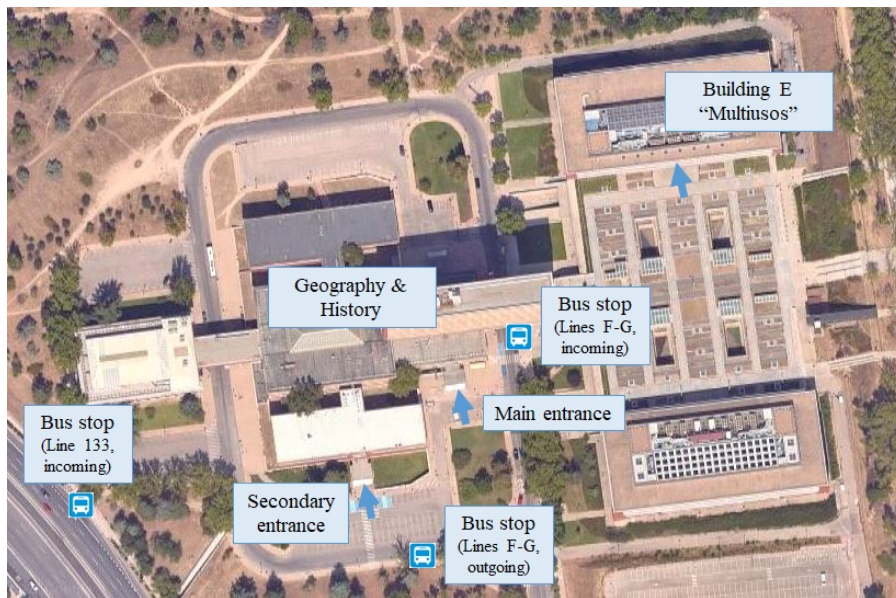
Information for participants (updated 25/05/2026)

### Venue

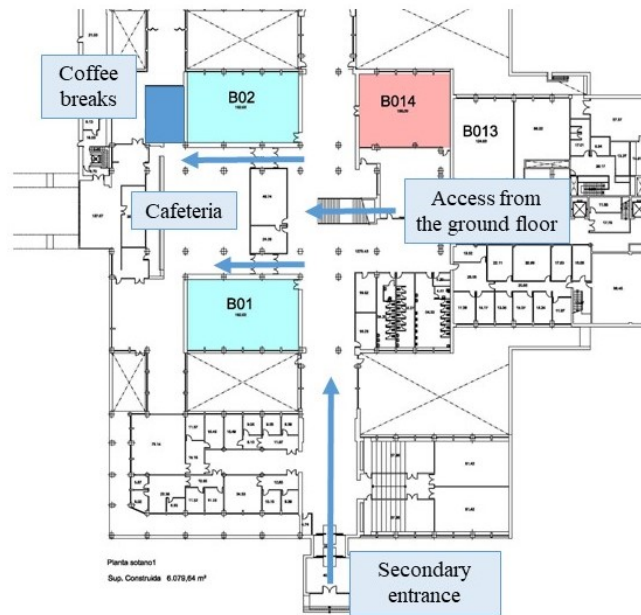
The conference will be held at the [Faculty of Geography and History](#). Panels and sessions will be held in rooms **014, 02** and **01** (Basement, see map), and welcome and plenary sessions in **Salón de Actos** (2<sup>nd</sup> floor, see map).

Bus lines [F](#) and [G](#) stop at the Faculty, the Metro station ([Ciudad Universitaria, line 6](#)) is 5-10 min away (walking). Also handy is bus line [133](#), coming from the city centre (see the [Travel planner](#)).

Upon **reception** (a desk will be available in the main entrance, Ground floor), participants will receive the complimentary materials for the conference. **Coffee breaks** will be catered and served at the Cafeteria (Basement, see map). **Lunches** will be self-catered and affordable choices (with vegetarian/vegan options) can be found in the Cafeteria of the building and in the Cafeteria of neighbouring [building “Multiusos E”](#). Both serve breakfast (8.00-12.00h.) and different food options at affordable prices, including a self-service menu (13.00-16.00h.) for €6,50.



## BASEMENT



### Airport

Madrid-Barajas International Airport is 30-45 min. from the city centre. Taxi, bus and Metro are available options to get to/move from the airport. Check [here](#) for full information.

### Transportation

To move around Madrid, it is advisable to get a transportation card (TTP, Tarjeta de Transporte Público). The TTP is valid for buses, Metro and local trains. Among the different options, tourists and visitors are advised to get the [TTP Multi](#) and buy a tourist ticket ([Billete Turístico](#)). TTPs can be purchased in Metro and train stations (also in the CRTM offices at the airport, Terminals 1 and 4). Check the website of the [CRTM](#) for full information.

### Accommodation

The Complutense has no in-campus accommodation, but there are plenty of options in the neighbouring areas. The areas of [Gaztambide-Arapiles-Argüelles](#) and [Bellas Vistas-Cuatro Caminos](#) are 15-20 min. from the venue of the conference (bus / Metro), but some extra time must be allowed in peak hours.

Madrid will be very busy in June, and room prices can rise very quickly, so it is advisable to book accommodation as soon as possible. Avoid hostels in the [city centre](#), since they are usually substandard and noisy. Here are a few suggestions, 15-45 min. from the campus:

Residences for researchers (usually cheaper, 60-80€, but with few rooms and highly demanded)  
[Residencia de Estudiantes](#) ([reservas@residencia.csic.es](mailto:reservas@residencia.csic.es), see [website](#))  
[Casa Velázquez](#) ([hotes@casadevelazquez.org](mailto:hotes@casadevelazquez.org), see [website](#))

Less than €100/night (hostels not always include breakfast)

[Debod Hostel](#)

[Hostal El Brezo](#)

[Safestay Madrid Central](#)

[Petit Hostel Palacio Real](#)

€100-150/night

[Pensión Numancia](#)

[MadRooms Hotel Boutique](#)

[Espahotel Plaza Basílica](#)

[Hostal Overnight](#)

[Hotel Ibis Madrid Centro](#)

[B&B HOTEL Madrid Centro Puerta del Sol](#)

[Muralto Madrid-Princesa](#)

More than €150/night

[Suites Viena Plaza de España](#)

[Hotel Exe Moncloa](#)

[Leonardo Hotel Madrid City Center](#)

[Hotel Índigo Madrid-Moncloa](#)