

Gitte Kristiansen es Profesora Titular del Departamento de Estudios Ingleses: Lingüística y Literatura de la Universidad Complutense de Madrid, donde enseña Semántica, Lingüística Cognitiva y Sociolingüística. Su investigación se centra en la Sociolingüística Cognitiva, una nueva tendencia dentro de la Lingüística Cognitiva que ha fomentado de forma muy activa durante la última década (publicó el primer volumen con el título “Cognitive Sociolinguistics” junto con René Dirven en el año 2008), y de forma más específica su investigación se desarrolla en el área de la percepción del lenguaje, la semántica cognitiva y los métodos de investigación. Sus publicaciones incluyen libros como *New Perspectives on Lexical Borrowing: Onomasiological, Methodological and Phraseological Innovations* (co-editado con Eline Zenner, 2014), *Contexts of Use in Cognitive Sociolinguistics*, número especial del *Journal of Pragmatics* 52: 1-104 (co-editado con Dirk Geeraerts, 2013), *Cognitive Sociolinguistics: Language Variation, Cultural Models, Social Systems* (co-editado con René Dirven, 2008) y *Advances in Cognitive Sociolinguistics* (co-editado con Dirk Geeraerts e Yves Peirsman, 2010). Gitte Kristiansen también es autora de artículos y capítulos de libros tales como “Social and linguistic stereotyping: a cognitive approach to accents” (2001), “How to do things with allophones: linguistic stereotypes as cognitive reference points in social cognition” (2003), “Towards a Usage-based cognitive phonology” (2006), “Style-shifting and shifting styles: a socio-cognitive approach to lectal variation” (2008) y “Variationist linguistics” (2015, with Dirk Geeraerts). Entre 2004 and 2012 Gitte Kristiansen era coordinadora general del Programa de Doctorado en Lingüística Inglesa (Mención de Calidad 2004, Mención de Excelencia 2010). Desde 2004 es Managing Editor de la serie de libros [Applications of Cognitive Linguistics](#) (Boston/New York, Mouton de Gruyter), editora asociada del [Journal of Cognitive Semantics](#) (Amsterdam, Brill) desde 2016, y Editor-in-Chief del [Complutense Journal of English Studies](#) (área de lingüística) 2014-2020. También forma parte de los Consejos Asesores de [Journal of Cognitive Linguistic Studies](#) (Amsterdam, John Benjamins) y The Journal of Language, Mind, Culture and Society (Polish Association of Cognitive Linguistics). Gitte Kristiansen ha organizado más de una docena de sesiones temáticas sobre *Cognitive Sociolinguistics* en congresos internacionales en Europa, America and Asia, evalúa proyectos de investigación para agencias nacionales (ANECA, FWO, NWO, etc) y forma parte de numerosos comités científicos de congresos internacionales. Gitte Kristiansen es IP del grupo de investigación [Cognitive Linguistics: Socio-Cognitive and Contrastive Studies](#) y fue Presidente de la [Asociación Española de Lingüística Cognitiva](#) (2016-2022).

Gitte Kristiansen is Associate Professor of English Linguistics at the Universidad Complutense de Madrid, where she lectures on Semantics, Cognitive Linguistics, and Sociolinguistics. Her research focuses on Cognitive Sociolinguistics, and more specifically on language perception and awareness, cognitive semantics and research methods. Her publications include books such as *New Perspectives on Lexical Borrowing: Onomasiological, Methodological and Phraseological Innovations* (co-edited with Eline Zenner, 2014), *Contexts of Use in Cognitive Sociolinguistics*, special issue of the *Journal of Pragmatics* 52: 1-104 (co-edited with Dirk Geeraerts, 2013), *Advances in Cognitive Sociolinguistics* (co-edited with Dirk Geeraerts and Yves Peirsman, 2010) and *Cognitive Sociolinguistics: Language Variation, Cultural Models, Social Systems* (co-edited with René Dirven, 2008). She is also author of articles and book chapters such as Social and linguistic stereotyping: a cognitive approach to accents (2001), How to do things with allophones: linguistic stereotypes as cognitive reference points in social cognition (2003), Towards a usage-based cognitive phonology (2006), Style-shifting and shifting styles: a socio-cognitive approach to lectal variation (2008) and Variationist linguistics (2015, with Dirk Geeraerts). Between 2004 and 2012 she coordinated the PhD programme in English Linguistics at the Department of English Language and Linguistics (High Quality Awards from the Ministry of Science and Innovation in 2004 and 2010). Since 2004 she is Managing Editor of the book series [Applications of Cognitive Linguistics](#) (Mouton de Gruyter), Associate Editor of the [Journal of Cognitive Semantics](#) (Brill) since 2016, and she was Editor-in-chief for the area of Linguistics of the [Complutense Journal of English Studies 2014-2020](#). She is also on the Advisory Board of the [Journal of Cognitive Linguistic Studies](#) (Benjamins) and *Language, Mind, Culture and Society* (Polish Association of Cognitive Linguistics). Gitte Kristiansen has organised over a dozen theme sessions on Cognitive Sociolinguistics at international conferences in Europe, America and Asia, evaluates research projects for national agencies (ANECA, FWO, NWO, etc.) and is on the scientific committee of numerous international conferences. Gitte Kristiansen is PI of the research unit [Cognitive Linguistics: Socio-Cognitive and Contrastive Studies](#) and was President of the [Spanish Association of Cognitive Linguistics](#) (2016- 2022).

TRAYECTORIA ACADEMICA/ACADEMIC TRAJECTORY

PhD Universidad Complutense de Madrid January 2003. Supervisor: Dr. Enrique Bernárdez Sanchis. Title: *Referencia Exofórica y Estereotipos Lingüísticos: Una Aproximación Sociocognitiva a la Variación Alofónica Libre en el Lenguaje Natural*. Sobresaliente cum Laude.

Postgraduate doctoral courses. Universidad Complutense de Madrid 1994

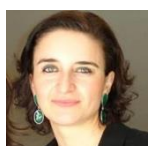
Degree in English Philology. Universidad Complutense de Madrid 1992

1st year of the BA in English Philology. University of Copenhagen 1987-1988

PhD supervision:



Jesús Martín Tevar. *Perceptions of English Varieties in the Spanish context: Gender Effects, Visual Priming and Question Types. An Empirical Approach*. Defended June 2017. Sobresaliente cum Laude.



Tamara Guliashvili. *English Insertions in the Discourse of Spanish Youth: Proactive Identity Construal*. Defended June 2017. Sobresaliente cum Laude.



Silvia Pereira Rojas. *Raising Metaphorical Awareness of Specialised Reading Discourse in University Settings*. Co-supervised with E. Dafouz Milne. Defended July 2017. Notable.



Liqin Xiong. *The Social and Linguistic Stereotypes of L1 and L2 Accents of Standard Chinese. An Experimental Study*. Liqin holds a competitive PhD grant from the Research Council of the People's Republic of China. Defended in 2018. Sobresaliente



Maria Angeles Jurado Bravo. *English as a Foreign Language tailored to regional varieties of Spanish. Lectometry, intelligibility and attitudes*. Maria Angeles holds a competitive 4-year PHD grant from the Spanish Ministry of Education and Science. Defended in 2018. Sobresaliente cum Laude.



Daniel Martín González. *Defining Judeo-Spanish from the Anglophone perspective of Reverend Alexander Thomson (1820-1899) and his literary production in Sephardic Language*. Daniel held the prestigious PhD grant UCM-Harvard. Co-directors: Luis Manuel Girón-Negrón (University of Harvard) and Aitor García Moreno (CSIC). Defended in 2020. Sobresaliente cum Laude.



Claudio Mastrangelo. *Linguistic Relativity and Conceptual Integration: An Empirical Study of the Categorization of Mythical Creatures* Defense envisaged in 2023.



Margarita García Romero. *Estás mas buena que la Cerveza. Conceptual Metaphor Theory and Attaction.* Defense envisaged in 2023.



Inés de la Villa Vecilla. *The Impact of Elicitation Methods in the Study of Language Attitudes: A Sociolinguistic Investigation involving nativeness and gender.* Inés holds a 4-year FPU contract associated with our research project. Defense envisaged in 2024.

PUBLICACIONES/PUBLICATIONS

Monografías y volúmenes editados/Monographs and edited volumes (selección)

Gitte Kristiansen, Karlien Franco, Stefano De Pascale, Laura Rosseel, Weiwei Zhang (Eds.). 2021. *Cognitive Sociolinguistics Revisited*. Berlin/Boston: Mouton de Gruyter, pp. 1-635.

Zenner, Eline and Gitte Kristiansen (eds.). 2014. *New Perspectives on Lexical Borrowing. Language Contact and Bilingualism*. Berlin/New York: Mouton de Gruyter.

Kristiansen, Gitte and Dirk Geeraerts (ed.). 2013. Contexts in Use in Cognitive Sociolinguistics. *Journal of Pragmatics* 52: 1-104. Special Issue.

Geeraerts, Dirk, Gitte Kristiansen and Yves Peirsman (eds.). 2010. *Advances in Cognitive Sociolinguistics*. Berlin/New York: Mouton de Gruyter.

Kristiansen, Gitte and René Dirven (eds.). 2008. *Cognitive Sociolinguistics: Language Variation, Cultural Models, Social Systems*. Cognitive Linguistics Research 39. Berlin/New York: Mouton de Gruyter.

Kristiansen, Gitte, Michel Achard, René Dirven and Francisco Ruiz de Mendoza Ibáñez (eds.) 2006. *Cognitive Linguistics: Current Applications and Future Perspectives*. Applications of Cognitive Linguistics 1. Berlin/New York: Mouton de Gruyter.

Kristiansen, Gitte. 2003. *Referencia Exofórica y Estereotipos Lingüísticos: Una Aproximación Socio-Cognitiva a la Variación Alofónica Libre en el Lenguaje Natural*. Madrid: Servicio de Publicaciones UCM

Capitulos de libro y articulos/Book chapters and articles (selección)

Kristiansen, Gitte. To appear 2023. Revisiting linguists' use of question types in attitude research: why Cognitive Semantics matters.

Kristiansen, Gitte, Mariana Montes and Weiwei Zhang. 2021. Cognitive Sociolinguistics in the 21st Century. In Gitte Kristiansen et al. (Eds.) *Cognitive Sociolinguistics Revisited*, 3-19. Berlin/Boston: Mouton de Gruyter.

Xiong, Liqin and Gitte Kristiansen. 2021. Chinese listeners' attitudes towards Shanghai-accented Standard Chinese across five regions. In Gitte Kristiansen et al. (Eds.) *Cognitive Sociolinguistics Revisited*, 279-294. Berlin/Boston: Mouton de Gruyter.

Jurado Bravo, Maria Angeles and Gitte Kristiansen. 2019. ASPA Tools or how to measure foreign accentedness and intelligibility in an objective manner. In Juan-Andrés Villena-Ponsoda, Francisco Díaz-Montesinos, Antonio-Manuel Ávila-Muñoz and Matilde Vida-Castro (Eds.) *Language Variation - European Perspectives VII*, 119-131. Amsterdam: John Benjamins.

Kristiansen, Gitte, Eline Zenner and Dirk Geeraerts. 2018. English as a Lingua Franca in Europe: The Identification of L1 and L2 accents. A multifactorial analysis of Pan-European data. *Review of Cognitive Linguistics* 16 (2): 495-518.

Zenner, Eline, Gitte Kristiansen and Dirk Geererts. 2016. Individual differences and *in situ* identity marking: Colloquial Belgian Dutch in the reality TV show "Expeditie Robinson". In Manuela Romano and M. Dolores Porto (Eds.) *Exploring Discourse Strategies in Social and Cognitive Interaction*, 37-77. Amsterdam/Philadelphia: John Benjamins.

Geeraerts, Dirk and Gitte Kristiansen. 2015. Linguistic variation. In Dagmar Divjak and Ewa Dabrowska. *A Handbook of Cognitive Linguistics*. Berlin/Boston: Mouton de Gruyter.

Geeraerts, Dirk and Gitte Kristiansen. 2014. Cognitive linguistics and language variation. In Jeanette Littlemore and John R. Taylor *The Bloomsbury Companion to Cognitive Linguistics* 202-2017. London/New York: Bloomsbury Academic.

Kristiansen, Gitte. 2014. Pluricentricity, language-internal variation and Cognitive Linguistics. In Augusto Soares da Silva, *Pluricentricity, Language Variation and Sociocognitive Dimensions*, 1-15.

Kristiansen, Gitte. 2011. Pluricentrism from the perspective of Cognitive Sociolinguistics: Theoretical, methodological and descriptive issues. In Augusto Soares da Silva, Amadeu Torres and Miguel Goncalves (eds.) *Pluricentric Languages. Linguistic Variation and Sociocognitive Dimensions*. Braga: Universidade Católica Portuguesa.

Kristiansen, Gitte. 2010. Lectal acquisition and linguistic stereotype formation: an empirical study. In Dirk Geeraerts, Gitte Kristiansen and Yves Peirsman (eds.) *Advances in Cognitive Sociolinguistics*. Cognitive Linguistics Research 45. Berlin/New York: Mouton de Gruyter.

Kristiansen, Gitte. 2008. Style-shifting and shifting styles: A socio-cognitive approach to lectal variation. In Gitte Kristiansen and René Dirven (eds.) *Cognitive Sociolinguistics: Language Variation, Cultural Models, Social Systems*, 45-88. Cognitive Linguistics Research 39. Berlin/New York: Mouton de Gruyter.

Kristiansen, Gitte. 2008. The group as a variable in the development of cognitive schemata. In Roslyn M. Frank, René Dirven, Tom Ziemke and Enrique Bernárdez (eds.) *Body, Language*

and Mind, Vol. II, 409-432. Cognitive Linguistics Research 35.2. Berlin/New York: Mouton de Gruyter.

Kristiansen, Gitte and Dirk Geeraerts. 2007. On non-reductionist intercultural pragmatics and methodological procedure. In Istvan Kecskes and Laurence R. Horn (eds.) *Explorations in Pragmatics. Linguistic, Cognitive and Intercultural Aspects*, 257-285. Mouton Series in Pragmatics 1. Berlin/New York: Mouton de Gruyter.

Kristiansen, Gitte, Michel Achard, René Dirven and Francisco Ruiz de Mendoza. 2006. Introduction. Cognitive Linguistics: Current Applications and Future Perspectives. In Kristiansen, Gitte, Michel Achard, René Dirven and Francisco Ruiz de Mendoza Ibáñez (eds.) *Cognitive Linguistics: Current Applications and Future Perspectives*, 1-17. Applications of Cognitive Linguistics 1. Berlin/New York: Mouton de Gruyter.

Kristiansen, Gitte. 2006. Towards a usage-based cognitive phonology. *International Journal of English Studies* 6 (2): 107-140.

Kristiansen, Gitte. 2005. Conceptual operations in social categorization and interaction: On the interplay between metonymy and social deixis. In Otal Campo, José Luis, Ignasi Navarro and Begoña Bellés Fortuño (eds). *Cognitive and Discourse Approaches to Metaphor and Metonymy*, 271-278. Universitat Jaume I.

Kristiansen, Gitte. 2004. The Socio-Cognitive Basis of Empowerment through Language: Style-shifting and Shifting Styles. *LAUD Series A: General & Theoretical Papers*. Paper no 608. Essen: LAUD.

Kristiansen, Gitte. 2003. How to do things with allophones: Linguistic stereotypes as cognitive reference points in social cognition. In René Dirven, Roslyn M. Frank and Martin Pütz (eds.) *Cognitive Models in Language and Thought*, 69-120. Cognitive Linguistics Research 24. Berlin/New York: Mouton de Gruyter.

Kristiansen, Gitte. 2002. On the Role and Functions of Phonetic Markers as a Linguistic Variable in Social Categorizations. *LAUD Series A: General & Theoretical Papers*. Paper No. 538. Essen: LAUD 2002.

Kristiansen, Gitte. 2001. Social and linguistic stereotyping: A cognitive approach to accents. *Estudios Ingleses de la Universidad Complutense* 9: 129-145.

PONENCIAS Y CONFERENCIAS/PRESENTATIONS AND INVITED TALKS

- April 2022. Cognitive Linguistics in Spain. Lecture at the Invited Theme Session "Cognitive Linguistics" (org. Gitte Kristiansen), celebrated at the L Symposium and IV International Conference of the Spanish Association of Linguistics, CSIC, Madrid, April 5-8.
- January 2021. Cognitive Sociolinguistics and Attitude Research. Invited Conference. The Hong Kong Polytechnic University. January 28.
- February 2021. Attitude Research and Cognitive Sociolinguistics: an Experimental Study. Máster de Formación de Profesorado de Educación Secundaria Obligatoria y Bachillerato. Departamento de Filologías y su Didáctica. Facultad de Formación de Profesorado y Educación. Universidad Autónoma de Madrid.

- May 2021. La Sociolingüística Cognitiva y un estudio experimental sobre acentos L1 y L2. Master en Lingüística Aplicada, Universidad Nebrija, Madrid. May 7.
- February 2020. Experimental Research on Attitudes towards Linguistic Varieties and Social Groups: A Practical Tour. February 10. Máster de Formación de Profesorado de Educación Secundaria Obligatoria y Bachillerato. Departamento de Filologías y y su Didáctica. Facultad de Formación de Profesorado y Educación. Universidad Autónoma de Madrid.
- August 2019. Asymmetries in Pluricentric Language Perceptions. 15th International Cognitive Linguistics Conference. August 6-11, Kwansai Gakuin University, Nishinomiya, Japan.
- August 2019. Cognitive Grammar Matters: Revisiting Linguists' Use of Questions Types in Attitude Research. With Jesús Martín Tevar. 15th International Cognitive Linguistics Conference. August 6-11, Kwansai Gakuin University, Nishinomiya, Japan.
- April 2019. Experimental research methods in cognitive linguistics. Specialised postgraduate seminar. Research Center for Modern Linguistics and Foreign Language Education. Southwest University, Chongqing, People's Republic of China.
- April 2019. The Empirical Turn in Conceptual Metaphor Theory. Honorary plenary speaker. 12th International Forum on Cognitive Linguistics. College of International Studies, Southwest University, Chongqing, People's Republic of China.
- March 2018. Language Perceptions in China: Attitudes of Native Chinese Speakers towards Native and Non-Native Accents of Standard Chinese. With Liqin Xiong. Guest lecture. School of International Studies, Zhejiang University, Hangzhou, People's Republic of China.
- March 2018. When Do Spanish Children Learn how to Distinguish Spanish Accents? And How Do they Learn? An Experimental Study on Lectal Acquisition in Madrid. Guest lecture at the School of International Studies, Hangzhou, People's Republic of China.
- March 2018. The Scope of Cognitive Sociolinguistics. Why Meaning and Methods Matter. Invited lecture for the 10th International Forum on Cognitive Linguistics. March 12-16, College of International Studies, Southwest University, Chongqing, People's Republic of China.
- March 2018. Language Perception and Attitudes II: Experimental Cognitive Sociolinguistics in the Mainland of China. With Liqin Xiong. Invited lecture for the 10th International Forum on Cognitive Linguistics. March 12-16, College of International Studies, Southwest University, Chongqing, People's Republic of China.
- March 2018. Language Perception and Attitudes I: Experiments on Language Acquisition and the Case of Europe. Invited lecture for the 10th International Forum on Cognitive Linguistics. March 12-16, College of International Studies, Southwest University, Chongqing, People's Republic of China.
- August 2017. Kristiansen, Gitte and Jesús Martín Tevar. Measuring the strength of factors on the implicitness-explicitness continuum. 16th International Conference on Methods in Dialectology, National Institute for Japanese Language and Linguistics (NINJAL), Tachikawa, Tokyo, Japan.
- June 2017. Jurado Bravo, María Angeles and Gitte Kristiansen. How to measure foreign accentedness and intelligibility in an objective way. 9th International Conference on Language Variation in Europe (iClave9). University of Malaga, Spain.
- May 2017. Kristiansen Gitte. The Rationale behind Gut Reactions to Language: A Case Study in Cognitive Sociolinguistics. Invited lecture for the Interphilological Lecture Series LinguA, Leibniz Universität Hannover.

- July 2016. Kristiansen, Gitte. European Perceptions of English as a Lingua Franca: a Multifactorial Analysis of Experimental Data. The 6th UK Cognitive Linguistics Conference. Bangor University, United Kingdom.
- June 2016. Kristiansen, Gitte. Cognitive Sociolinguistics: Status quo and challenges. Introduction to invited Colloquium on Cognitive Sociolinguistics at the 21st Sociolinguistic Symposium. Universidad de Murcia, Spain.
- March 2016. Kristiansen, Gitte. Cognitive Semantics vs. Reductionist Semantics. Invited keynote lecture. 11th International Chinese Lexicology Conference. Pekin University, People's Republic of China.
- March 2016. Kristiansen, Gitte. The Acquisition of Lectal Perception in Young Children: a Multivariate Analysis of Experimental Data. Invited keynote talk. School of Language Sciences. Beijing Language and Culture University, People's Republic of China.
- July 2015. Martín Píriz, Sheila and Gitte Kristiansen. A Corpus-Based Approach to Fictive Motion: A Contribution to Usage-Based Cognitive Linguistics. 13th International Cognitive Linguistics Conference. University of Northumbria, United Kingdom.
- May 2015. Kristiansen, Gitte. How the French Perceive (and are Perceived by) their European Peers. 6th International Conference of the French Association of Cognitive Linguistics, AFLiCo6. Université Stendhal-Grenoble 3.
- October 2014. Xiong, Liqin and Gitte Kristiansen. Native speakers' perceptions of native and non-native Mandarin accents: An empirical study. 9th AELCO International Conference. University of Badajoz, Spain.
- September 2014. Kristiansen, Gitte. The perception of non-native varieties: methods and findings in perceptual dialectology.
- November 2013. Kristiansen, Gitte. Perceptions of L1 accents through English as a Lingua Franca: a pan-European Experimental study. Invited talk. Circle of Linguists, University of Copenhagen, Denmark.
- 47th Annual Meeting of the Societas Linguistica Europaea, Adam Mickiewicz University, Poznań, Poland.
- April 2014. Kristiansen, Gitte. Empathy in Language, Literature and Society. The Construal of Empathy in Language: Strategies at the Level of Speech Sounds. University of Iceland, Reykjavik, Iceland.
- October 2013. Kristiansen, Gitte. Perceptions of L2 accents: Linguistic and social stereotyping through English as a Lingua Franca. Invited talk. University of Lille, France.
- June 2013. Kristiansen, Gitte. An experimental study of perceptions of L2 accents: Linguistic and social stereotypes of English as a Lingua Franca. 12th International Cognitive Linguistics Conference. University of Alberta, Edmonton, Canada.
- June 2013. Xiong, Liqin and Gitte Kristiansen. Attitudes towards salient accents of Mandarin: An empirical study of social and linguistic stereotyping in Mainland China 12th International Cognitive Linguistics Conference. University of Alberta, Edmonton, Canada.
- July 2011. Kristiansen, Gitte. Child language acquisition and lectal categorization: a multivariate analysis of experimental data. 11th International Cognitive Linguistics Conference. Xi'an, People's Republic of China.
- May 2011. Kristiansen, Gitte. Metaphor and metonymy in social cognition. Invited keynote talk. RaAM Specialized Seminar: Metaphor Across Time and Genre. Palacio de Valdeparaíso, Almagro, Spain.
- October 2010. Kristiansen, Gitte. Usage-based perceptual dialectology: why some schemas become entrenched and others don't. Invited talk. Theme session *The Interaction of Entrenchment and Conventionalization* (organisers: Friedrich Ungerer y Hans-Jörg

Schmid). Fourth International Conference of the German Cognitive Linguistics Association. University of Bremen, Germany.

- September 2010. Kristiansen, Gitte. Pluricentricity: Theoretical and methodological issues. Plenary talk. International Conference on Pluricentric Languages: Linguistic Variation and Sociocognitive Dimensions. Catholic University of Portugal, Braga.
- March 2010. Kristiansen, Gitte. On the necessity of a Cognitive Sociolinguistics: Dialectology as a non-modular approach to lectal variation. Plenary talk. *34th* International LAUD Symposium. Cognitive Sociolinguistics: Language Variation in its Structural, Conceptual and Cultural Dimensions. Universität Koblenz-Landau, Germany.
- June 2009. Kristiansen, Gitte. Cognitive dialectology. Languages and varieties from a Cognitive Linguistics perspective. Invited talk. 7th International China Forum on Cognitive Linguistics. University of Beihang, Beijing, People's Republic of China.
- November 2007. Kristiansen, Gitte. Awareness, distribution, and acquisitional patterns in social cognition: putting theory to the test through cognitive sociolinguistic methods. The First Conference of the Swedish Association for Language and Cognition. University of Lund, Sweden.
- August 2007. Kristiansen, Gitte. On the necessity of a cognitive sociolinguistics. The case of lectal varieties and language acquisition. 2nd Conference of the United Kingdom Cognitive Linguistics Association. *New Directions in Cognitive Linguistics*. Cardiff University, Wales, UK
- June 2006. Kristiansen, Gitte. Applied cognitive linguistics: Language acquisition and lectal varieties. An empirical study. Second Biennial Conference on Cognitive Science. St. Petersburg State University, Russia.
- March 2006. Geeraerts, Dirk and Gitte Kristiansen. On usage-based intercultural pragmatics and methodological procedure. Plenary Talk. 31st International LAUD Symposium. *Intercultural Pragmatics: Linguistic, Social, and Cognitive Approaches*. Universität Koblenz-Landau, Germany.
- July 2005. Kristiansen, Gitte. Towards a usage-based cognitive phonology: On speech styles as experientially grounded construals and phonemic description. Talk presented within the Theme Session *Phonology in the Cognitive Grammar Worldview* (organisers: Geoffrey Nathan and José Antonio Mompeán). 9th International Cognitive Linguistics Conference. Yonsei University, Seoul, South Korea.
- April 2004. Kristiansen, Gitte. The socio-cognitive basis of empowerment through language: Style-shifting and shifting styles. 30th International LAUD Symposium. *Empowerment through Language*. University of Koblenz-Landau, Germany.
- July 2003. Kristiansen, Gitte. Phonological description and levels of abstraction: On Linguistic varieties and phonemes as prototype categories. 8th International Cognitive Linguistics Conference. *Cognitive Linguistics, Functionalism, Discourse Studies*. Universidad de La Rioja, Spain.
- July 2003. Kristiansen, Gitte. Categorization and counterfactual reasoning: Challenging research questions from the field of Social Psychology. Talk presented within the Theme Session *Situated Embodiment: The Social and Biological Grounding of Metaphorical and Symbolic Thought* (organisers: Roslyn Frank, René Dirven, Jordan Zlatev, Tom Ziemke). 8th International Cognitive Linguistics Conference. *Cognitive Linguistics, Functionalism, Discourse Studies*. Universidad de La Rioja, Spain.
- March 2002. Kristiansen, Gitte. On the role and functions of phonetic markers as a linguistic variable in social categorizations. 29th International LAUD Symposium. *The Language of Politico-Social Ideologies*. University of Koblenz-Landau, Germany.

MIEMBRO DE COMITÉS CIENTÍFICOS/MEMBER OF SCIENTIFIC COMMITTEES (short selection)

- 4th International Conference on Figurative Thought and Language. University of Braga, Portugal, 23-26 October 2018.
- 51st Annual Meeting of the Societas Linguistica Europaea. University of Tallin, Estonia. 29 August-1st September 2018.
- iClave9. International Conference on Language Variation in Europe. University of Málaga, Spain. 6-9 June 2017.
- 21st Sociolinguistic Symposium. University of Murcia, Spain, 15-18 June, 2016.
- 48th Annual Meeting of the Societas Linguistica Europaea, Leiden University Centre for Linguistics (LUCL), 2-5 September 2015.

- 13th International Cognitive Linguistics Conference, University of Newcastle, United Kingdom, 20-25 June 2015.
- Conceptual Structure, Discourse and Language, University of California at Santa Barbara, 4-6 November 2014.
- 46th Societas Linguistica Europaea, Poznan, Poland, September 2014
- 46th Societas Linguistica Europaea, Split, Croacia, Septiembre 2013
- 12th International Cognitive Linguistics Conference, University of Alberta, Canada. June 21-29, 2013.
- VIII Conference of the Spanish Association of Cognitive Linguistics, Universidad de Huelva, October 2011.
- 44th International Societas Linguistica Europaea. Universidad de La Rioja, Logroño, Spain. September 8-11 2011
- 11th International Cognitive Linguistics Conference. Xi'an, People's Republic of China. July 11-17 2011
- VII Congreso Internacional de AELCO: Imaginando el Mundo: Mecanismos Cognitivos de Pensamiento y Discurso. Almagro, Spain. September 29-October 2 2010
- International Conference on Pluricentric Languages. Linguistic Variation and Sociocognitive Dimensions. Universidad Católica de Braga, Portugal. September 15-17 2010
- 34th International LAUD Symposium Cognitive Sociolinguistics: Language Variation in its Structural, Conceptual and Cultural Dimensions. Universität Koblenz-Landau, Germany. March 15-18 2010.
- International Conference on Language, Communication and Cognition. Brighton, United Kingdom. August 4-7 2008.

EVALUACIÓN DE PROYECTOS Y PUBLICACIONES/REFEREEING: PROJECTS AND PUBLICATIONS (selección)

- NWO (Dutch Organisation for Scientific Research)
- FWO (Flemish Organisation for Scientific Research)
- ANEP (Spanish National Agency of Project Evaluation)
- Research Council of the Université Catholique de Louvain (UCL)
- Review of Cognitive Linguistics (Benjamins)
- Journal of Cognitive Linguistics (Mouton de Gruyter)
- Cognitive Linguistics Research (Mouton de Gruyter)
- Cognitive Science (Wiley-Blackwell)

- Research Methods in Applied Linguistics (Elsevier)
- Journal of Cognitive Semantics (Brill)
- Journal of the European Association of Languages for Specific Purposes International
- Journal of Humanities and Arts Computing (Edinburgh University Journal of Intercultural
- Pragmatics (Mouton de Gruyter)
- Journal of Linguistics (Walter de Gruyter)
- Journal of Sociolinguistics Studies (Equinox)
- Journal of Pragmatics and Society (Benjamins)
- Planet Communication (Mouton de Gruyter)
- Studies in Language and Society (Benjamins)

PERTENENCIA A ASOCIACIONES/MEMBERSHIP OF LINGUISTIC ASSOCIATIONS

Spanish Association of Cognitive Linguistics Asociación (AELCO). 2002 –

International Cognitive Linguistics Association (ICLA). 2003 –

Societas Linguistica Europaea. 2010-

Board member of the Spanish Association of Cognitive Linguists 2012-2016 Board member of the Spanish Association of Cognitive Linguists 2002-2004 President of the Spanish Association of Cognitive Linguistics 2016-2022.

ORGANIZACIÓN DE CONGRESOS Y SESIONES TEMÁTICAS/ORGANISATION OF CONFERENCES AND THEME SESSIONS

April 2022. *Cognitive Linguistics and its Applications in Spain*. 50th Conference of the Spanish Society of Linguistics (SEL). CSIC, Madrid. Organizer: Gitte Kristiansen. April 5-8.

November 2021. *2nd International Young Researchers in Cognitive Linguistics Conference*. Main organiser: M. Dolores Porto Requejo. Co-organizers: Gitte Kristiansen, Manuela Romano, María Muelas Gil, María Ángeles Jurado Bravo. Universidad de Alcalá de Henares.

November 2019. *1st International Young Researchers in Cognitive Linguistics Conference*. Main organizer: Gitte Kristiansen. Co-organisers: Manuela Romano Mozo, M. Dolores Porto Requejo, Maria Muelas Gil, Maria Angeles Jurado Bravo, Inés de la Villa. Universidad Complutense de Madrid.

October 2018. *11th International Conference of the Spanish Association of Cognitive Linguistics*. Main organizer: Antonio Barcelona. Universidad de Córdoba, Spain.

October 2016. *10th International Conference of the Spanish Association of Cognitive Linguistics*. Main organizer: M. Dolores Porto. Co-organizers: Manuela Romano Mozo and Maria Angeles Jurado Bravo. University of Alcalá de Henares, Spain

June 2016. *Cognitive Sociolinguistics*. Invited Colloquio. Sociolinguistics Symposium 21. Universidad de Murcia, Spain.

September 2015. Main organizer of the *1st UCM Pre-doctoral Conference on English Linguistics*. (UPCEL15). Co-organizers: Maria Angeles Jurado Bravo, Alfonso Moya, Yolanda Berdasco. Universidad Complutense de Madrid.

September 2014. *The Perception of Non-Native Varieties: Methods and Findings in Perceptual dialectology*. 47th Annual Meeting of the Societas Linguistica Europaea.

June 2013. *Cognitive Sociolinguistics: Variationist & Interactional Sociolinguistics from a CL Point of View*. 12th International Cognitive Linguistics Association. University of Edmonton, Alberta, Canada.

September 2011. *Semantic Borrowing*. 44th International Conference of the Societas Linguistica Europaea. Universidad de La Rioja, Spain

October 2010. *Cognitive Sociolinguistics*. Theme Session celebrated at the 7th International Conference of the Spanish Cognitive Linguistics Association. Palacio Cardenal Lorenzana, Toledo, Spain.

March 2010. 34th International LAUD Symposium. *Cognitive Sociolinguistics: Language Variation in its Structural, Conceptual and Cultural Dimensions*. Universität Koblenz-Landau, Germany.

September 2009. *Pluricentric Languages. Social Cognition and Linguistic Variation*. 42nd International Conference of the Societas Linguistica Europaea, University of Lisbon, Portugal.

July 2008. *Lectal and Multilingual Variation*. 3rd Language, Culture and Mind Conference, University of Southern Denmark, Odense, Denmark.

July 2007. *Cognitive Sociolinguistics*. 10th International Cognitive Linguistics Conference. Jagellonian University, Kraków, Poland

March 2006. On usage-based intercultural pragmatics. 31st International LAUD Symposium. Intercultural Pragmatics: Linguistic, Social and Cognitive Approaches. Universität Koblenz-Landau, Germany.

July 2005. *Lectal Variation and the Conceptualisation of Lectal Varieties*. Theme session celebrated at the 9th International Cognitive Linguistics Conference, Yonsei University, Seoul, South Korea.