

CAFETERÍA

6.5

ANTON REVILLA, MIGUEL ANGEL
GOMEZ CALDERON, OSCAR

6.4

CARREÑO SANCHEZ, FERNANDO

6.3

CABRERA GRANADO, EDUARDO
EZQUERRO RODRIGUEZ, JOSE M.

6

Despachos Sección Departamental
de Óptica

Planta Sótano
Edificio Principal



The floor plan is drawn with cyan lines for walls and green lines for doors. A central area is labeled 'Despachos Sección Departamental de Óptica'. To the right of this area is a larger room labeled 'Planta Calle Edificio Clínica'. Below the central area is a long row of smaller rooms, and at the bottom is a larger room labeled 'Clínica de Optometría'. A red schematic is overlaid on the left side of the plan, showing a grid of lines with arrows and small circles, likely representing a layout or flow. The name 'ÁLVAREZ FERNÁNDEZ-BALBUENA, ANTONIO' and the title 'D: Técnicos de Óptica' are written in the rightmost room.

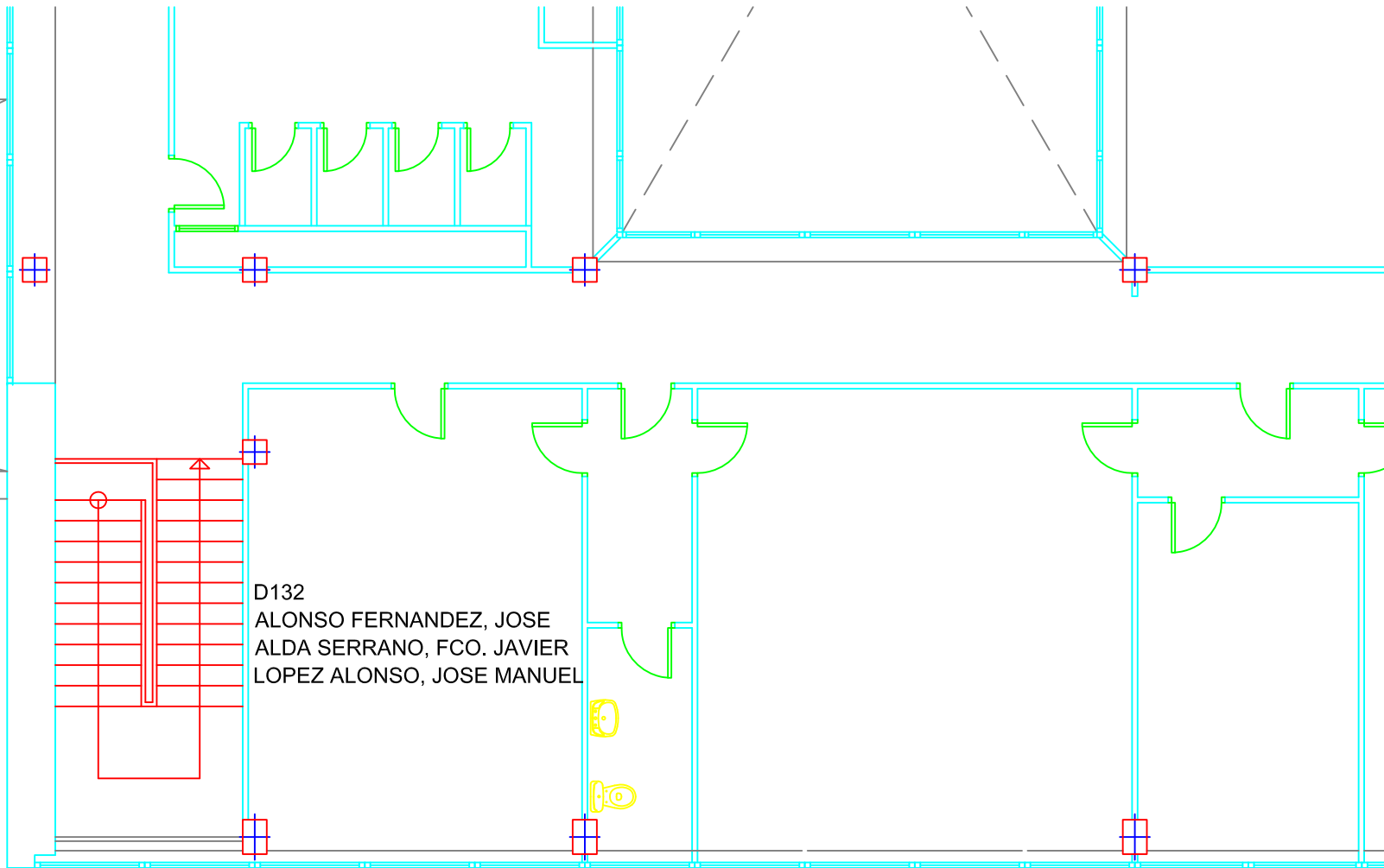
Despachos Sección Departamental
de Óptica

Planta Calle
Edificio Clínica

ÁLVAREZ FERNÁNDEZ-BALBUENA, ANTONIO

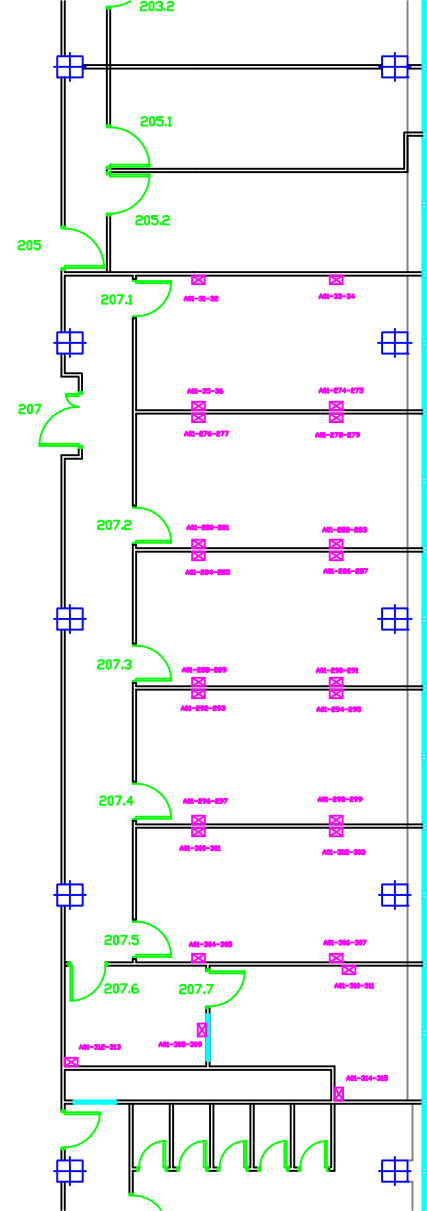
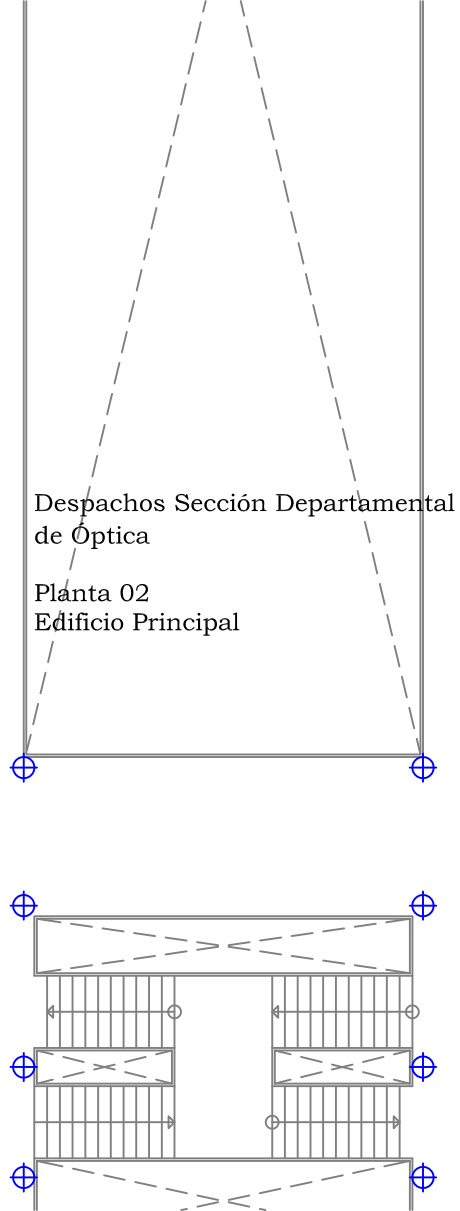
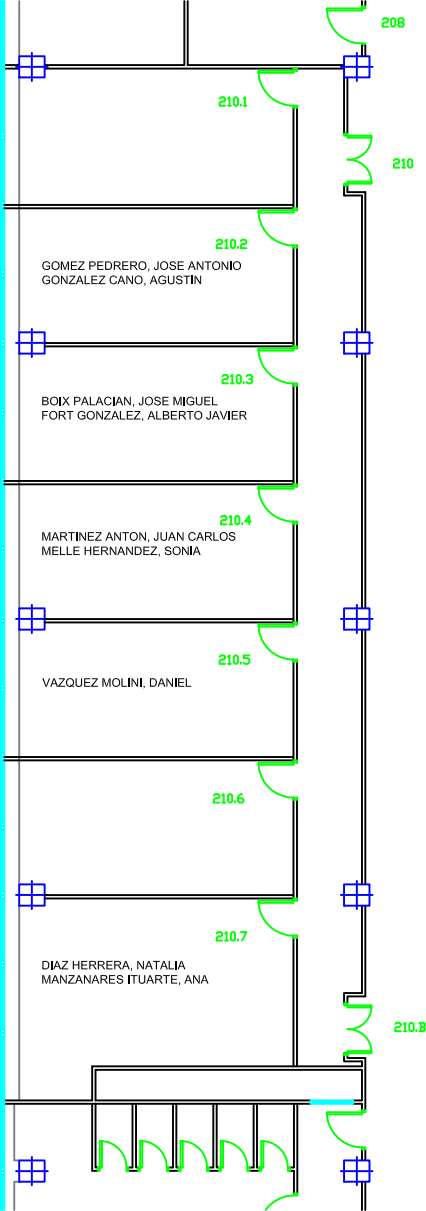
D: Técnicos de Óptica

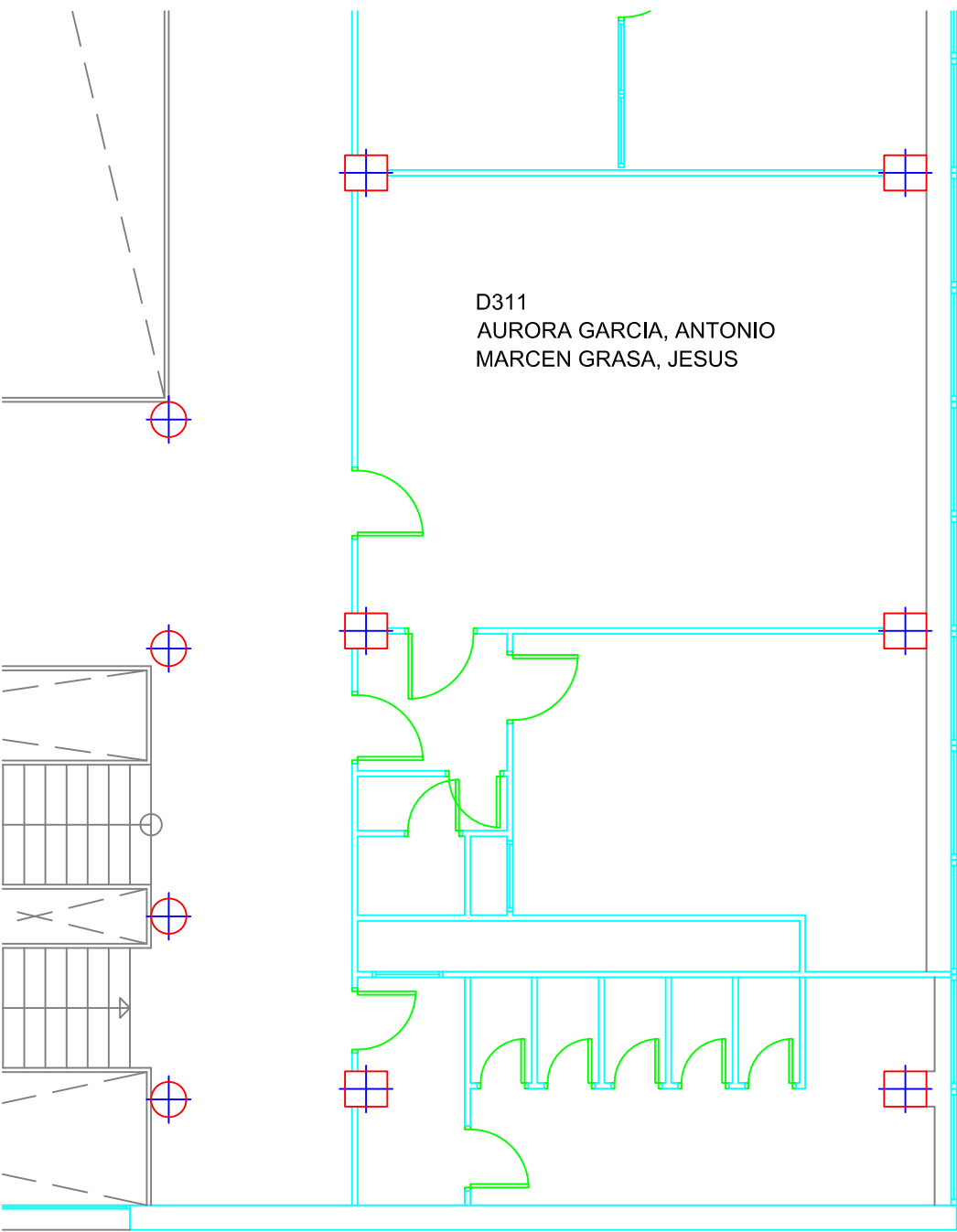
Clínica de Optometría



Despachos Sección Departamental
de Óptica

Planta 01
Edificio Decanato

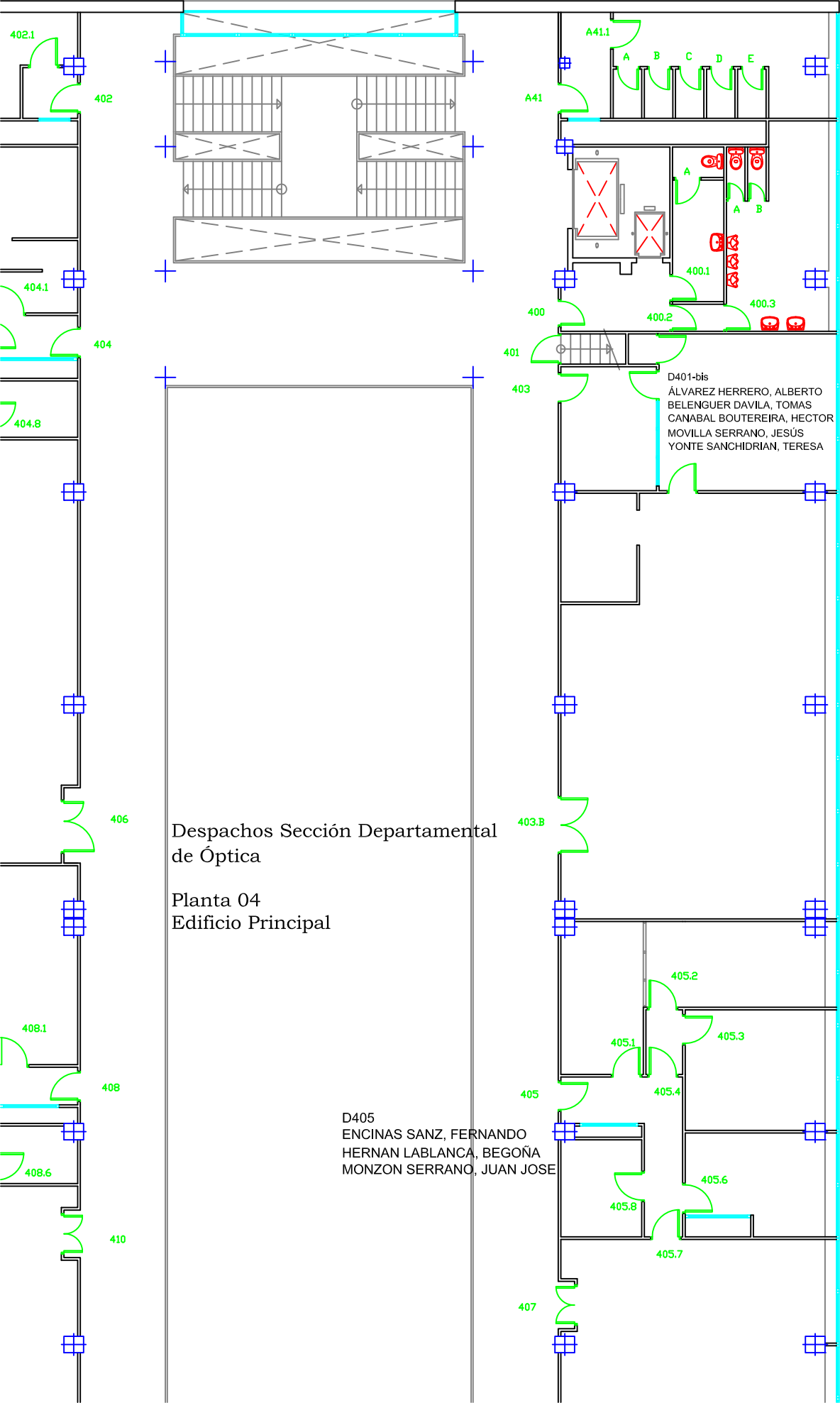




D311
AURORA GARCIA, ANTONIO
MARCEN GRASA, JESUS

Despachos Sección Departamental
de Óptica

Planta 03
Edificio Principal



Despachos Sección Departamental
de Óptica

Planta 04
Edificio Principal

D405
ENCINAS SANZ, FERNANDO
HERNAN LABLANCA, BEGOÑA
MONZON SERRANO, JUAN JOSE

D401-bis
ÁLVAREZ HERRERO, ALBERTO
BELENGUER DAVILA, TOMAS
CANABAL BOUTEREIRA, HECTOR
MOVILLA SERRANO, JESÚS
YONTE SANCHIDRIAN, TERESA