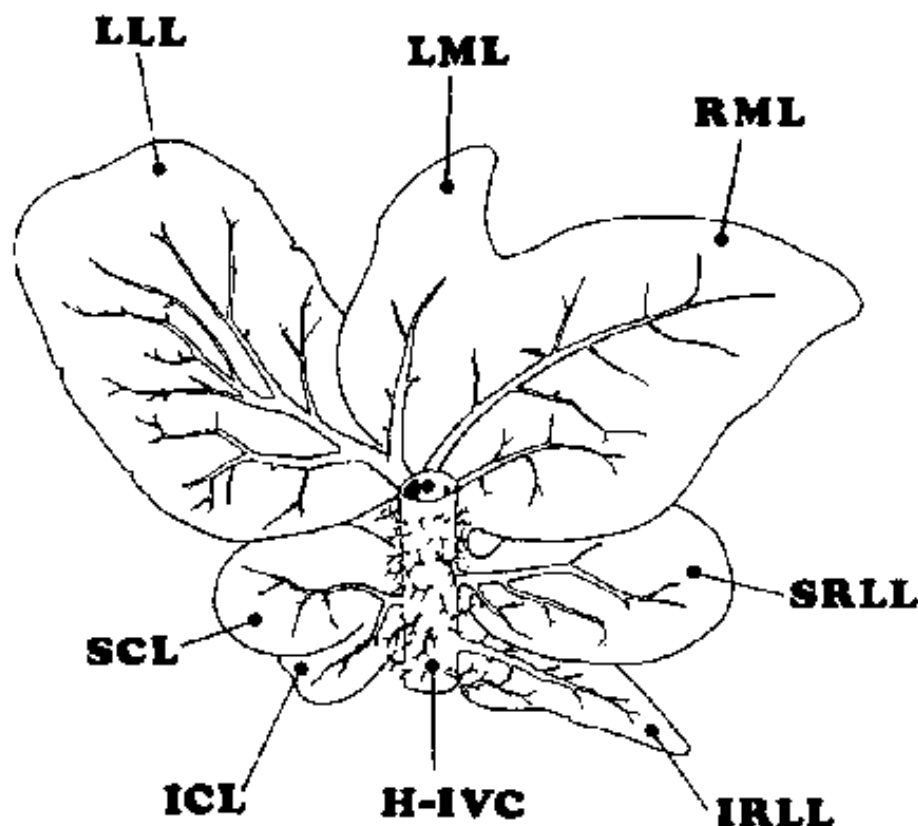


## SURGICAL ANATOMY OF THE LIVER IN WISTAR RATS

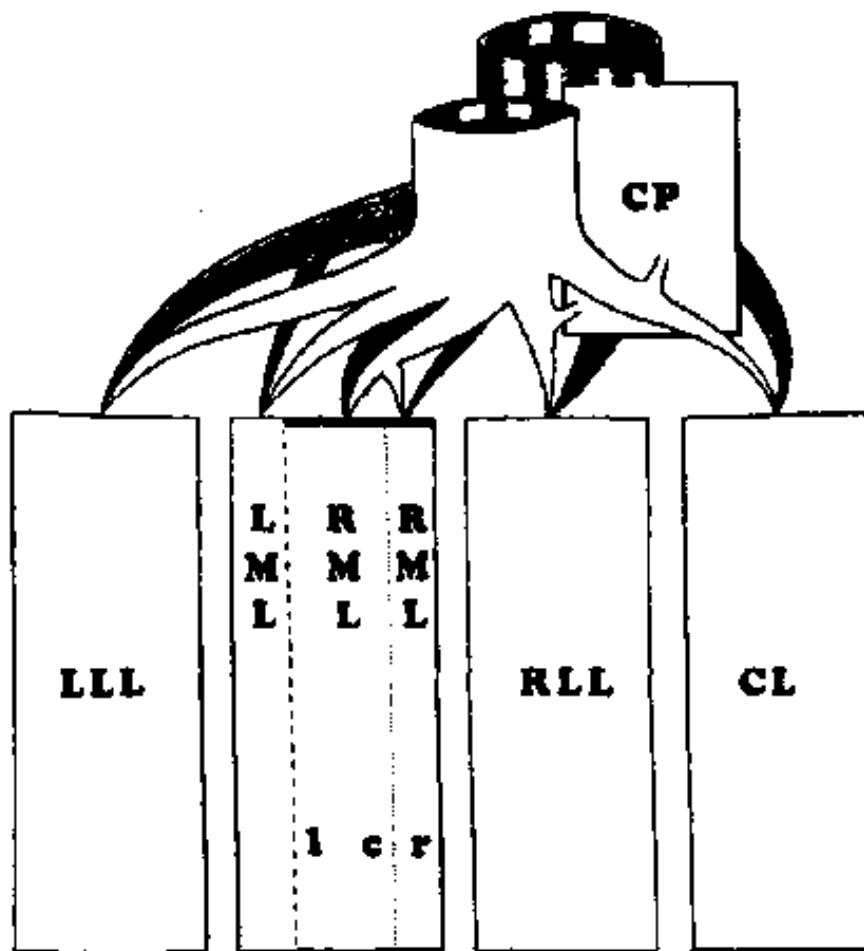
LORENTE, L.,\* ALLER, M.A., RODRIGUEZ, J., DURÁN, M.C.,  
DURAN, H.J., ALONSO S. and ARIAS, J.

*Department of Surgery, Hospital Universitario San Carlos,  
Complutense University of Madrid, Madrid, Spain*

*(Accepted for publication 22 January 1995)*



**Figure 6** Schematic representation of the most frequent venous drainage of the liver in the Wistar rat. H-IVC: intrahepatic inferior vena cava; ICL: inferior caudate lobe; SCL: superior caudate lobe; LLL: left lateral lobe; RML: right middle lobe; SRLL: superior right lateral lobe; IRL: inferior right lateral lobe.



**Figure 7** Functional anatomy of the liver in the Wistar rat. Portal pedicles are shown on an anterior level to the venous pedicles. The caudate (CL), the right lateral (RLL), the central (c) and left (l) zones of the right middle (RMI), the left middle (LML) and the left lateral (LLL) lobes are vascularized by a first order pedicle. Only the caudate process (CP) and the right (r) portion of the RML receive second order pedicles. In relation to the venous drainage, the drainage arising from CP, CL, RLL, RML and LLL is by first order pedicles. Only the LML drains by a second order venous pedicle.