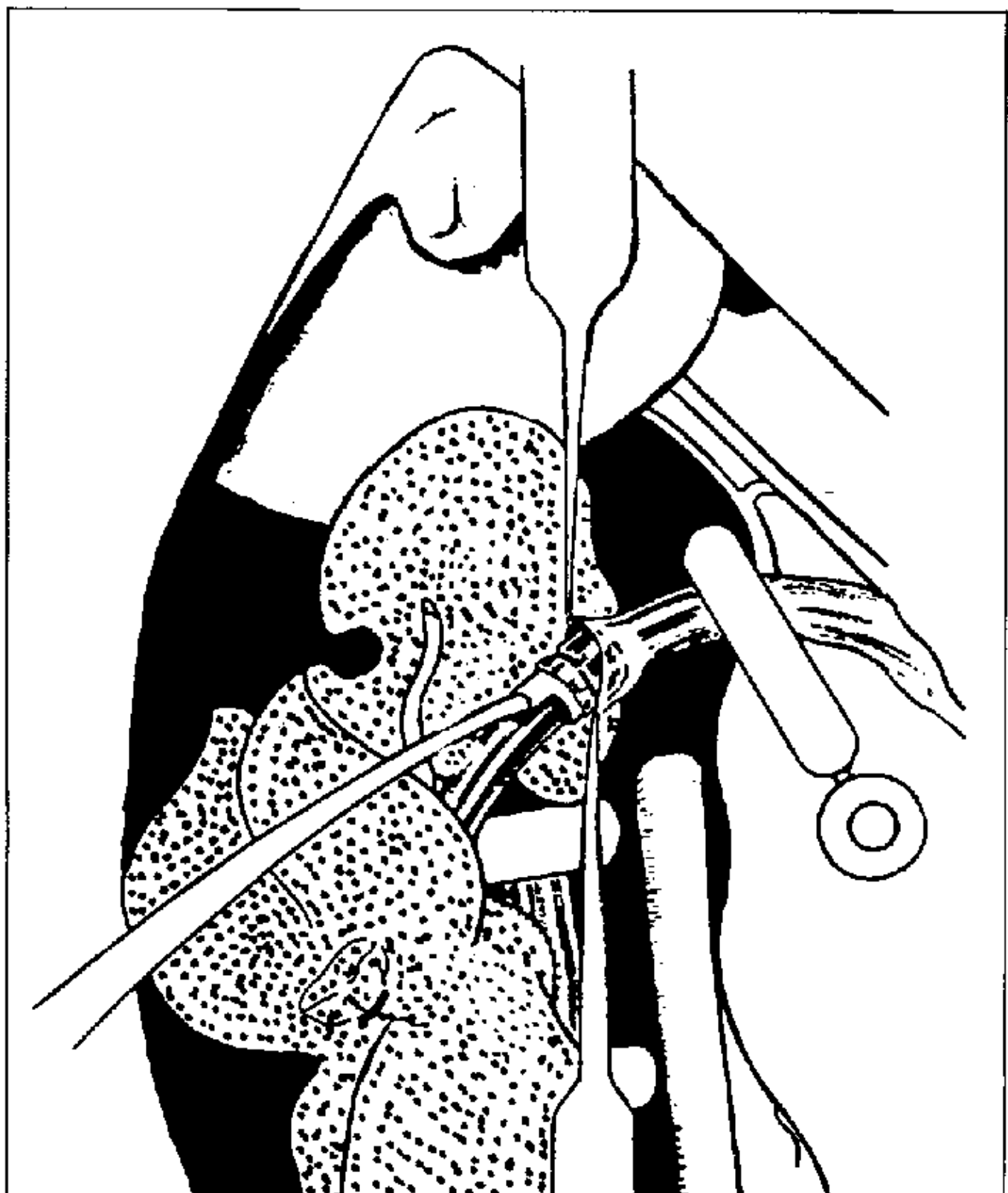
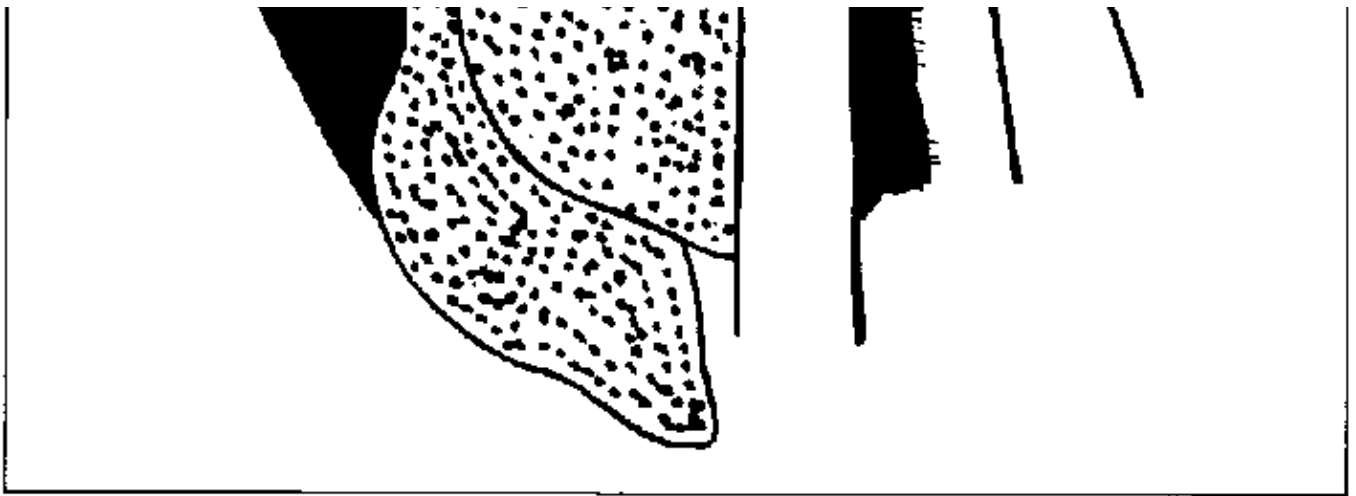


# Study of two different portal anastomosis techniques in heterotopic liver transplantation in the rat

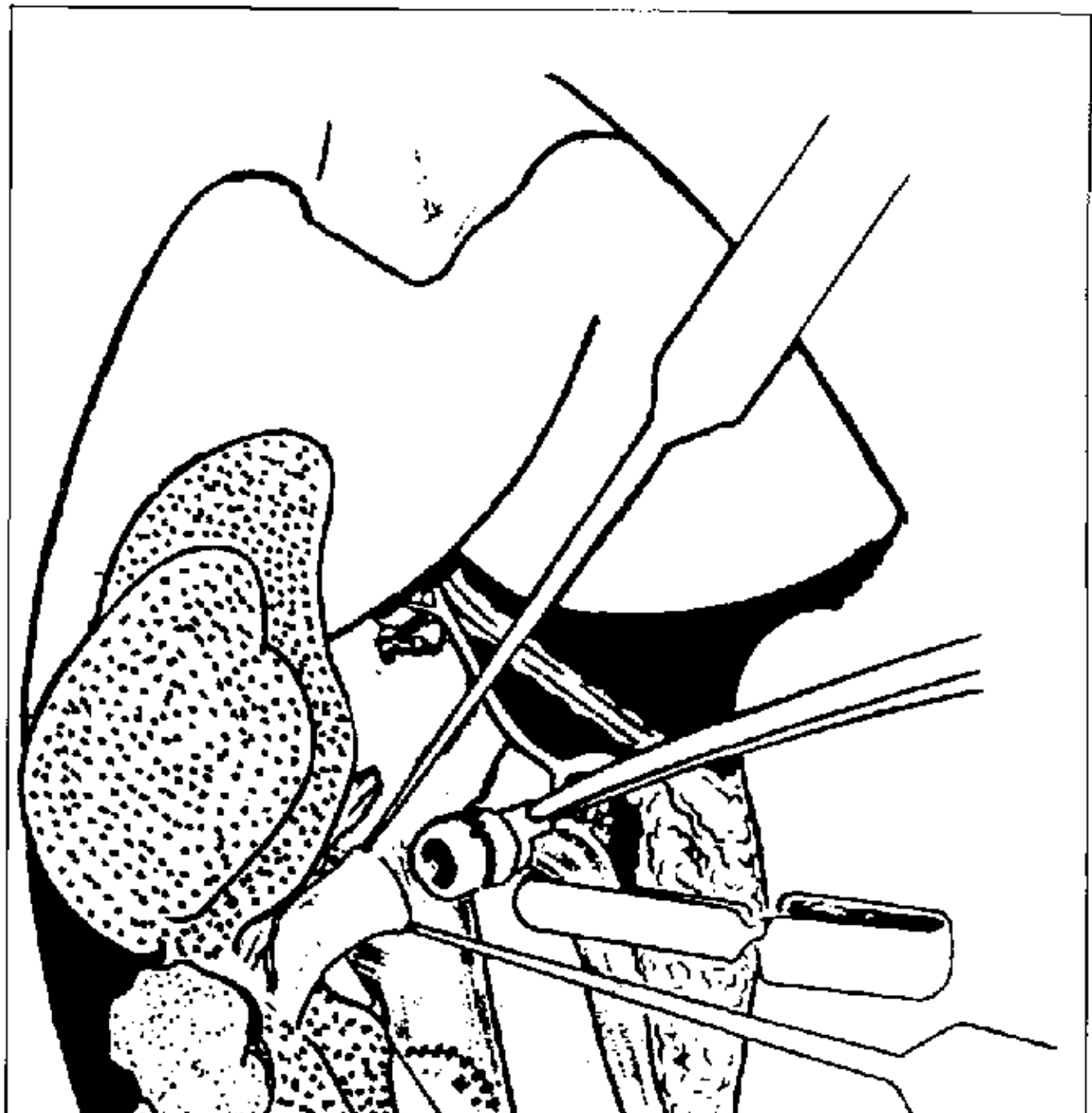
L. Lorente, M.A. Aller, L.M. Lorente, J. Arias

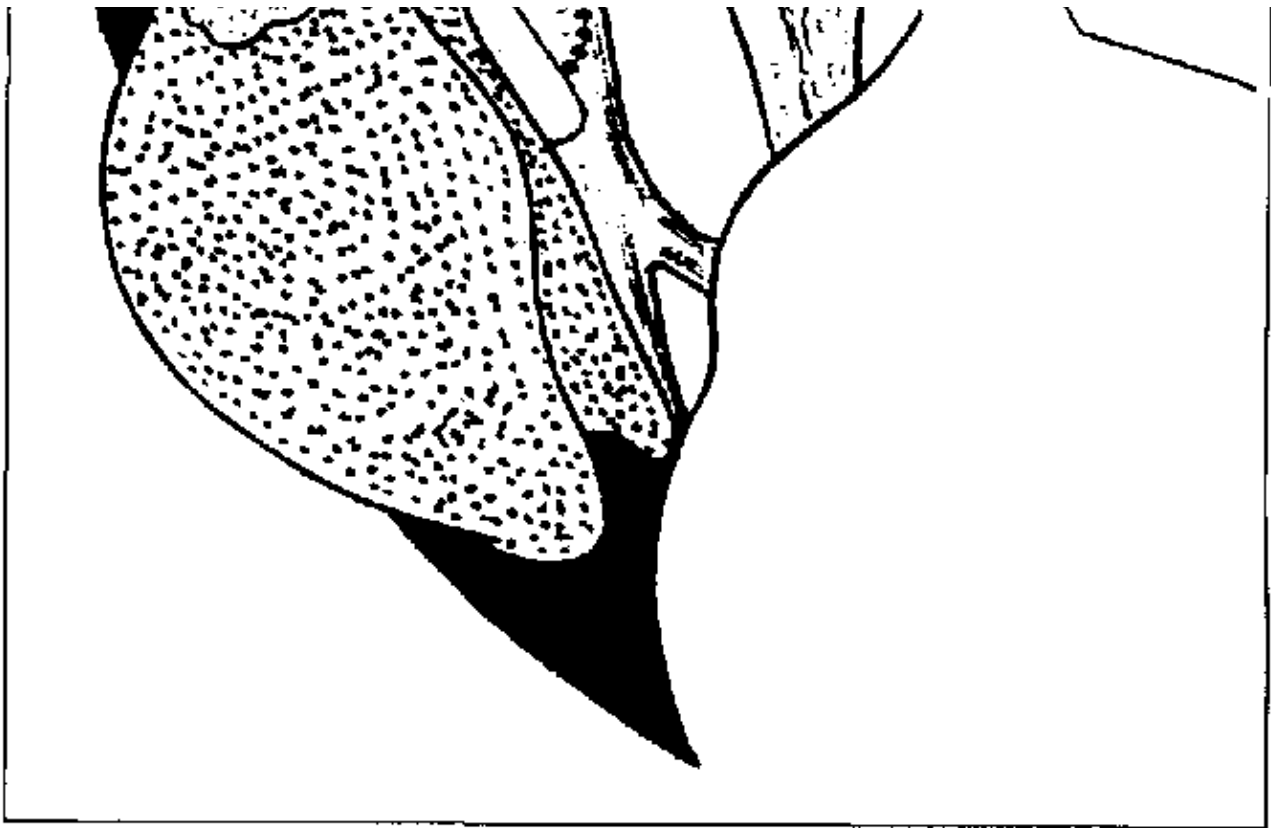
DEPARTMENT OF SURGERY, HOSPITAL UNIVERSITARIO SAN CARLOS, UNIVERSIDAD COMPLUTENSE DE MADRID, MADRID, SPAIN





*Fig. 1. End-to-end portal anastomosis. The cuff is secured to the donor portal vein by a ligature and is introduced into the recipient portal vein by means of two clamps.*





*Fig. 2. Heterotopic partial liver transplantation. Placement of the cuff in the recipient portal vein, which has been clamped and transected, prolongs the intraoperative portal hypertension time in the recipient animal.*