

MORPHOFUNCTIONAL STUDY OF THE CAUDATE PROCESS OF THE LIVER IN THE RAT

LORENTE L.,*† ALLER M.A.,* ARIAS J.L.,** RODRIGUEZ G.,*
BEGEGA A.,** LOPEZ L.** and ARIAS J.*

**Surgery Department, Medical Faculty, Complutense University of Madrid*

***Psychobiology Laboratory, Psychology Faculty, University of Oviedo, Spain*

(Accepted for publication 24 September 1994)

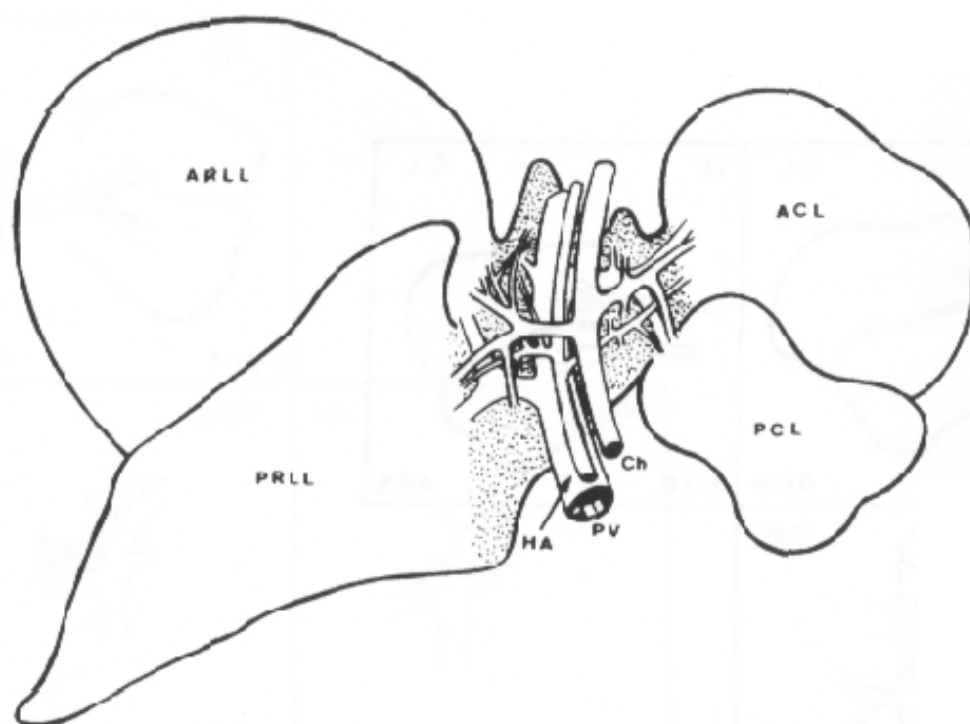


Figure 6 Graphic representation of the inferior lobes of the liver, their arterial and portal vascularization and biliary drainage. The dotted zone corresponds to the bridge of parenchyma between the anterior (ACL) and posterior (PCL) caudate lobe and the anterior (ARLL) and posterior (PRL) right lateral lobe. This zone could correspond to the caudate lobe and caudate process of the human liver. PV: portal vein. HA: hepatic artery. Ch: common bile duct.

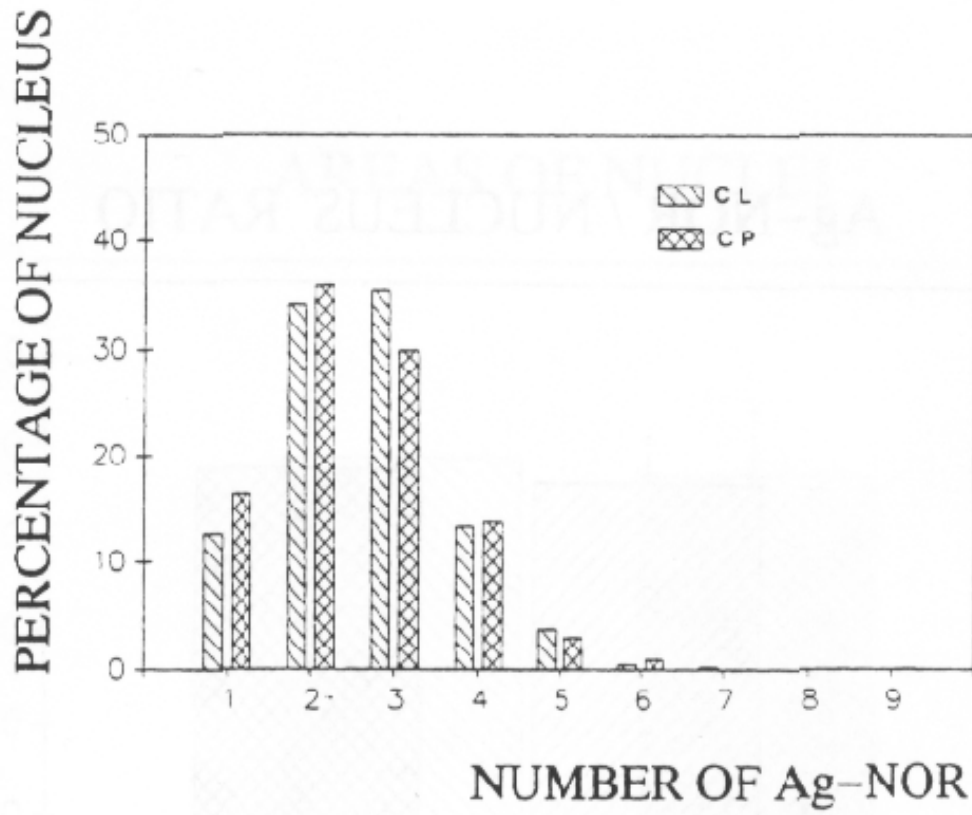


Figure 10 Relationship of the percentage of nucleus by number of Ag-NORs in the caudate lobe and in the caudate process.