

## Microsurgery Applied to the Segmentary Autotransplantation of the Pancreas in the Dog

J. Arias\*, J.I. Troba\*\*, L. Lorente\*, J. Rodriguez\*\*\*, E. Tejero\*, A. Caballero\*, H. Duran\*.

Hospital Universitario San Carlos, Madrid (Spain). \*I Cátedra de Patología Quirúrgica. \*\*Servicio de Medicina y Cirugía Experimental. \*\*\*Cátedra de Obstetricia y Cirugía de la Facultad de Veterinaria de Zaragoza (Spain).

Address: Dr. J. Arias, I. Cátedra de Patología Quirúrgica, Hospital Universitario San Carlos, Ciudad Universitaria. c/ Martín Lagos, s/n. 28040 - Madrid (Spain).

### REFERENCES

Sutherland DER, Goetz FC and Najarin JS (1984) One hundred pancreas transplants at a simple institution. *Ann Surg*, 200 (4): 414-440.

Dubernard JM, San Severino R, Melandri M et al. (1987) Comparison of segmental pancreatic transplantation with duct obstruction and pancreaticoduodenal transplantation

with enteric diversion. *Transplant Proc*, 19 (5): 3572-3574.

Arias J (1987) Técnicas microquirúrgicas en el trasplante experimental de órganos. *Ann R Acad Nac Med*, 104 (2): 215-230.

Tejero E, Arias J, Lorente L et al. (1986) Técnicas de microcirugía vascular en el autotrasplante de páncreas en el perro. *Rev Esp Enferm Apar Dig*, 70 (1): 1-12.

Dubouski KM (1982) An O-toluidine method for body fluid glucose determinations. *Clin Chem*, 8: 215-235.

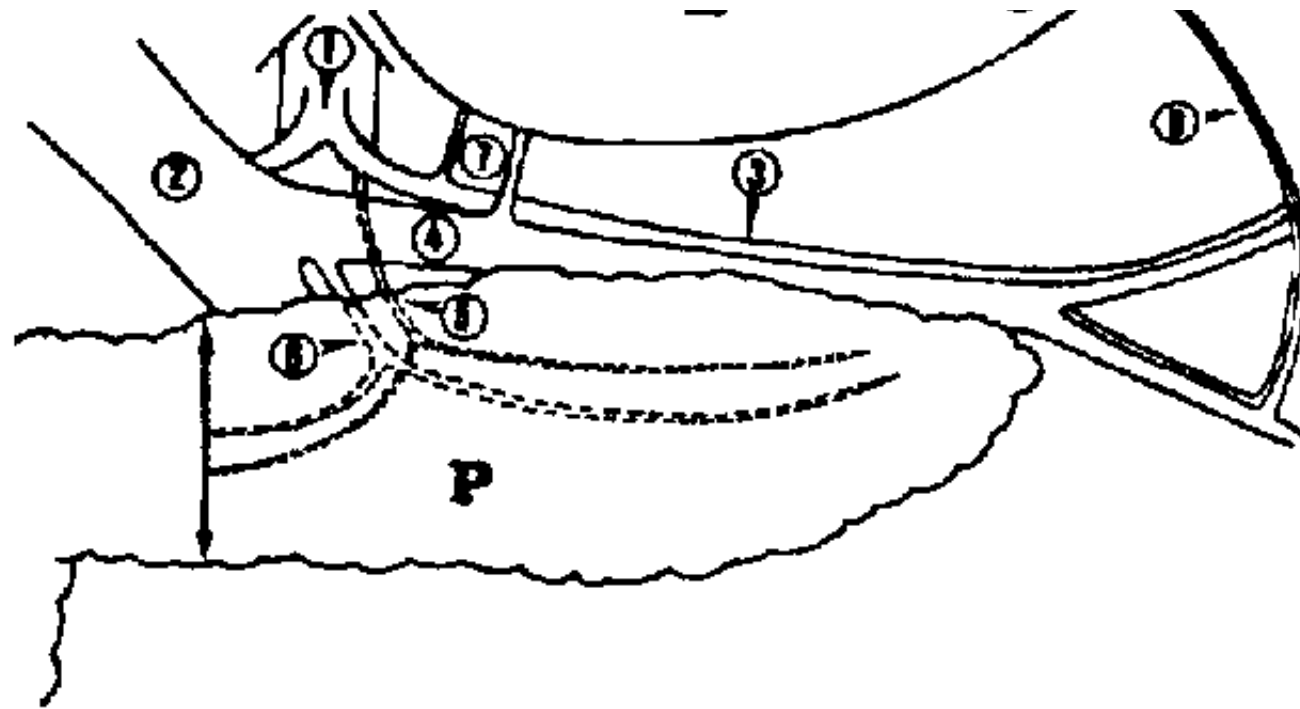
Groth CG, Gollste H, Lundgren G et al. (1982) Successful outcome of segmental human pancreatic transplantation with enteric exocrine diversion after modifications in technique. *Lancet*, 2: 522-524.

MacDonald AS, Macaulay MA, Elliot T et al. (1986) Preservation-reperfusion injury in pancreas transplantation. *Transplant Proc*, 18 (3): 533-535.

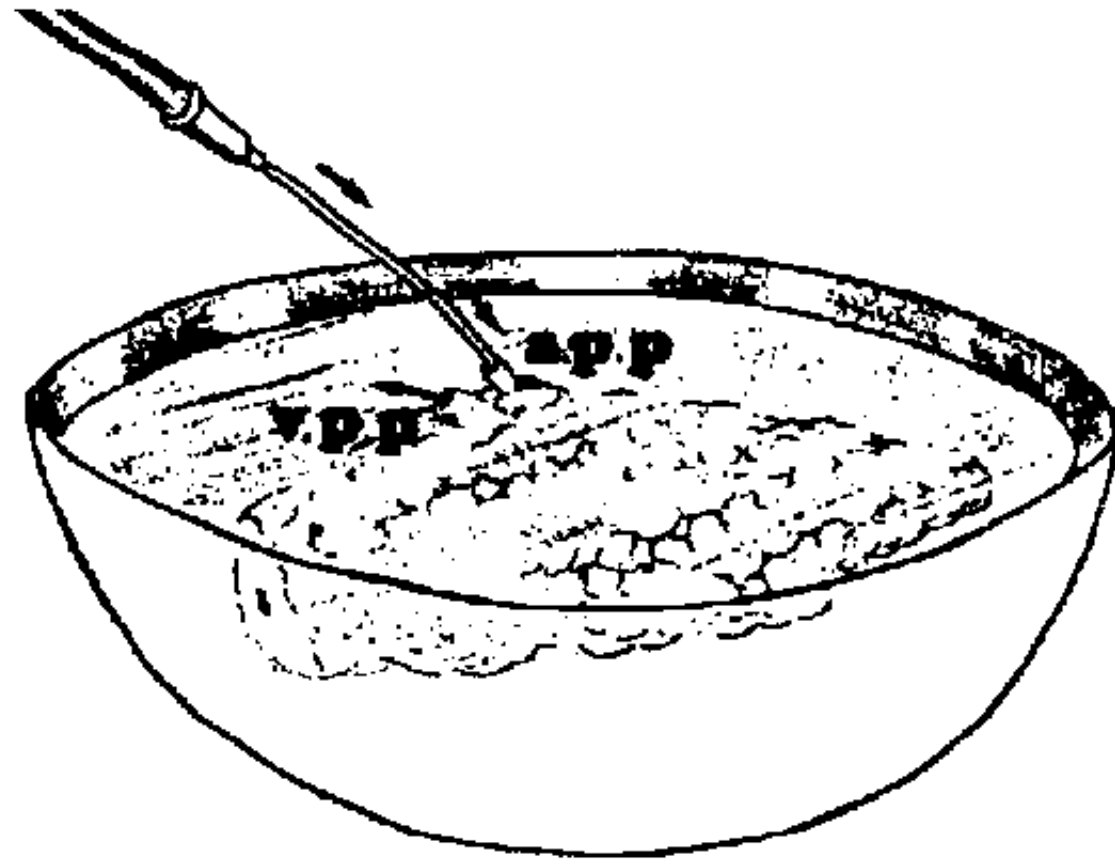


**E**





*Fig. 3: Vascularization of the pancreatic segment consisting of the tail and adjacent portion of the transplanted body. 1. Celiac Trunk. 2. Portal Vein. 3. Splenic Artery. 4. Splenic Vein. 5. Main Pancreatic Artery. 6. Main Pancreatic Vein. 7. Left Gastric Vessels. 8. Left Gastroepiploic Vessels. P. Pancreas E. Stomach*



*Fig. 4: "In vitro" perfusion of the left pancreatic segment through the main pancreatic artery (App). Drainage is carried out through the main pancreatic vein (Vpp).*