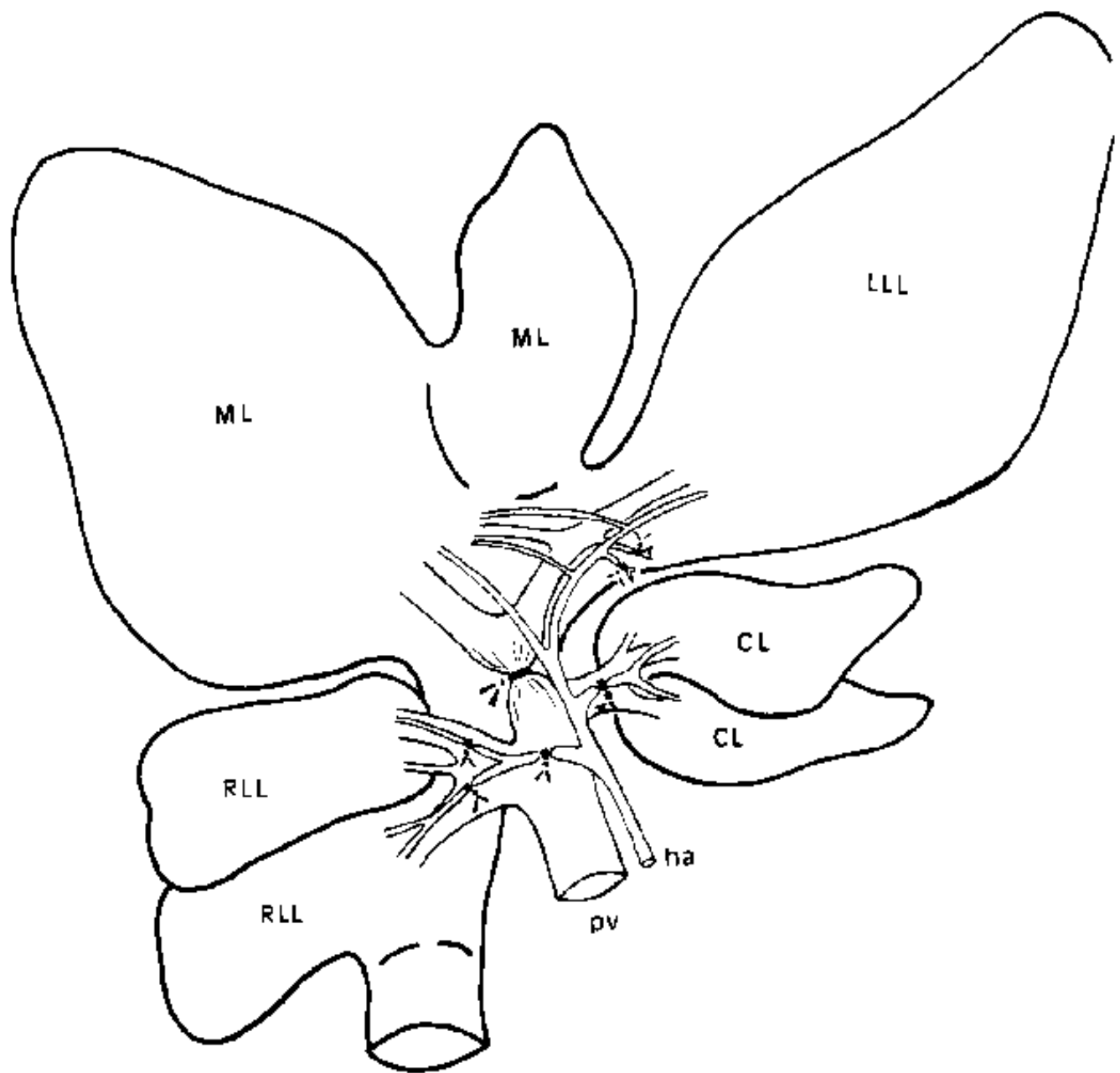


## **INFLUENCE OF PORTAL AND ARTERIAL VASCULARIZATION IN THE RAT LIVER**

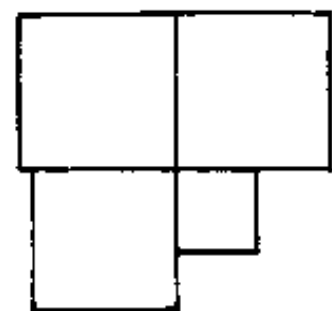
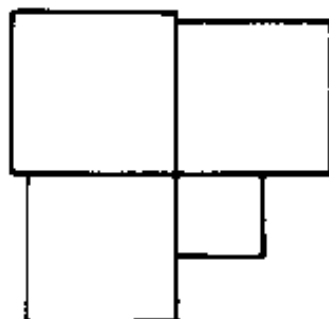
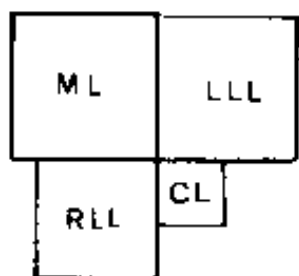
L. LORENTE, S. ALONSO, M.A. ALLER, G. RODRIGUEZ and J. ARIAS

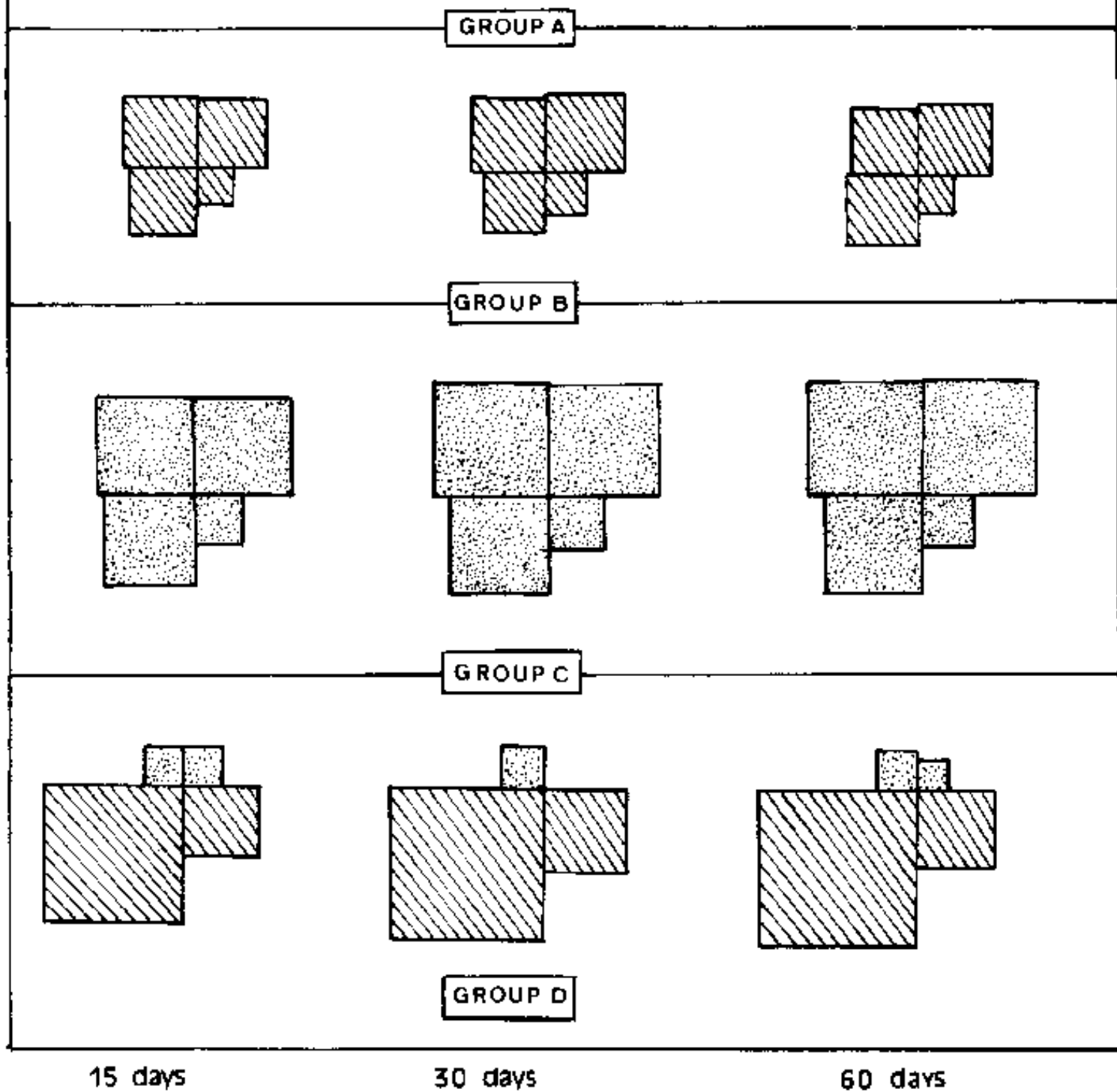
*Surgery Department, Hospital Universitario San Carlos,  
Complutense University in Madrid*

*(Accepted for publication December 17th, 1992)*



**Figure 2** Portal branch ligation of the middle lobe (LM) and left lateral lobe (L.L.) and arterial branch ligation of the right lateral lobe (RLL) and the caudate lobe (CL).  
p.v. portal vein; ha. hepatic artery.





**Figure 4** Graphic representation of the mean value in grams of the lobes which make up the liver in the rat in Groups A, B, C and D at 15, 30 and 60 days of the p.o. evolution.

RLL - right lateral lobe, MI - middle lobe, LLL - left lateral lobe, CL - caudate lobe. ▨ hepatic parenchyma with arterial vascularization. ▩ hepatic parenchyma with portal vascularization.