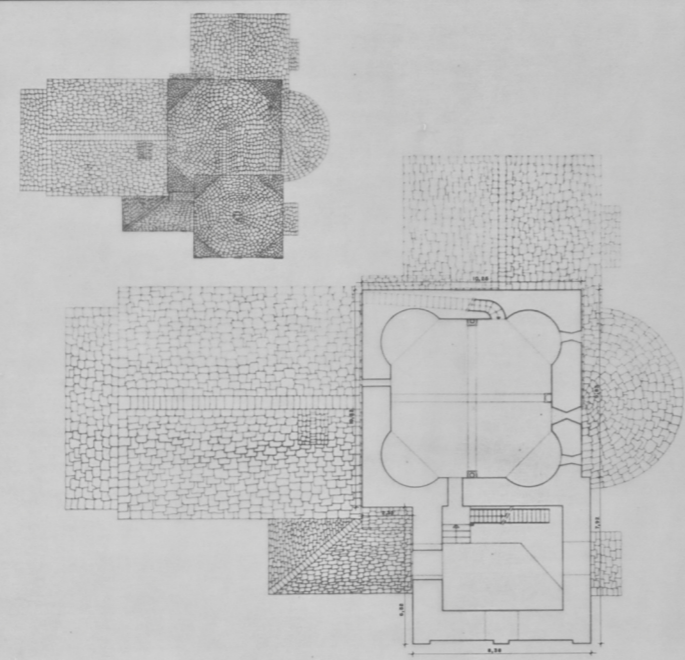
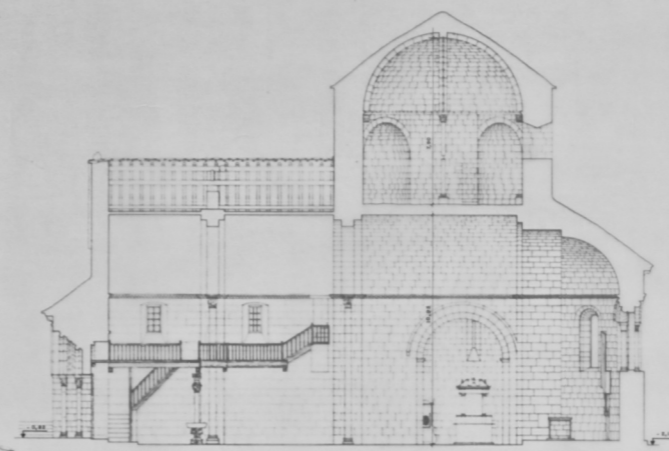


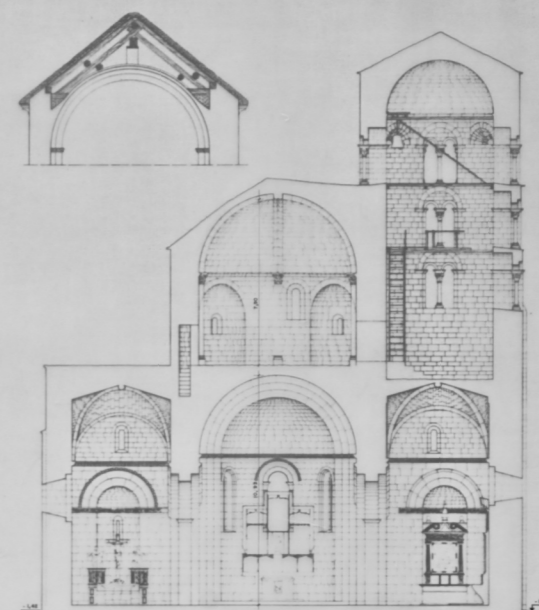
PLANTA NIVEL ENTRADA



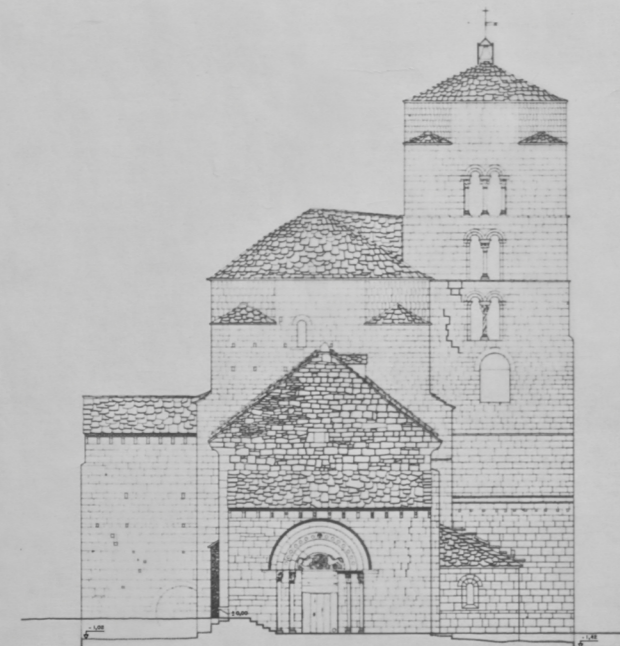
PLANTA NIVEL ESTANCIA CUBERTAS



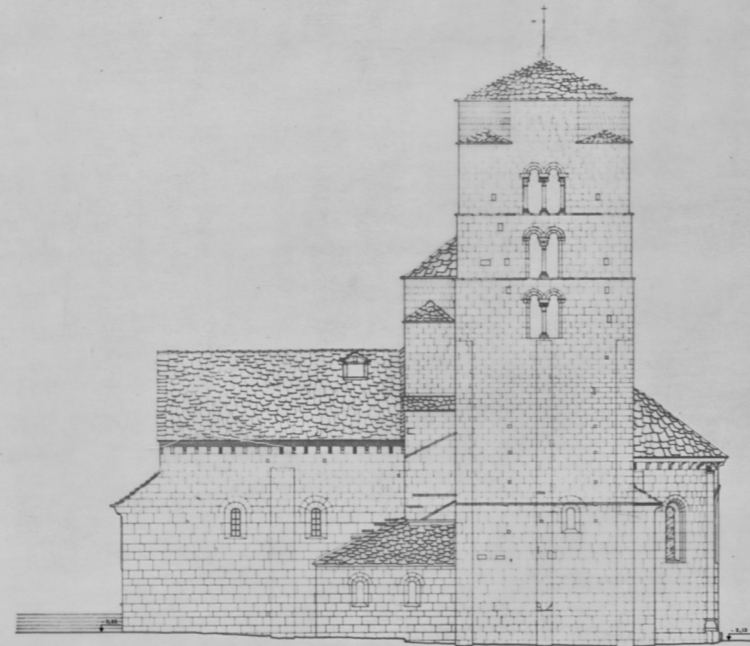
SECCION LONGITUDINAL (A-F)



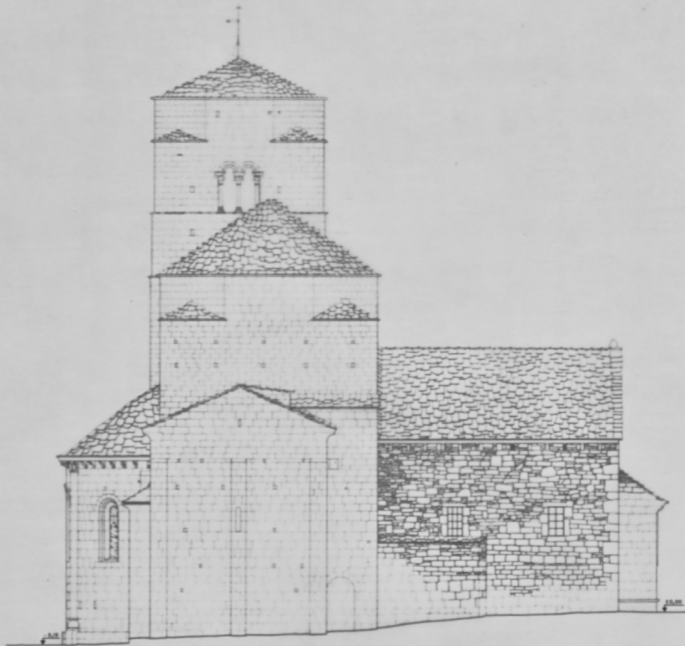
SECCION TRANSVERSAL (B-B')



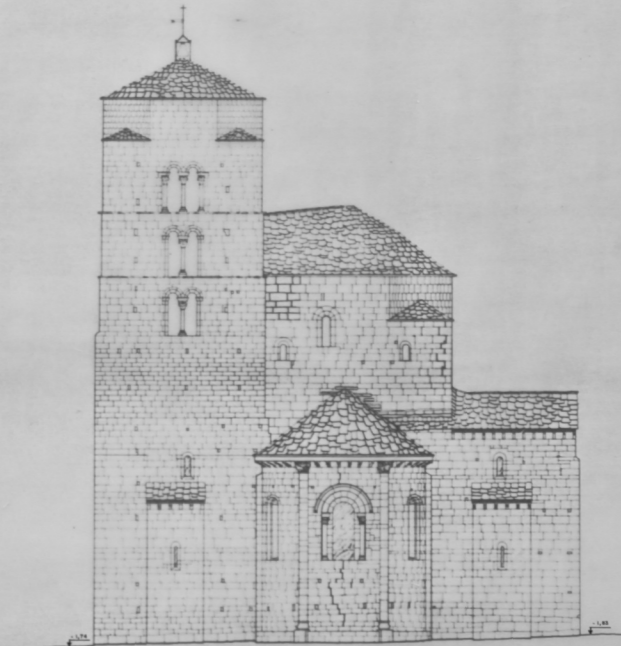
ALZADO FRONTAL



ALZADO LATERAL DERECHO



ALZADO LATERAL IZQUIERDO



ALZADO POSTERIOR